



# 10,000 LBS Two-Post Lifts Instruction Manual



## WARNING



- This instruction manual is an essential integral part of this product. Please read all instructions.
- Properly keep this manual for use during the maintenance.
- This equipment is only used for its clearly designed purpose, and never use it for other purposes.
- The manufacturer is not responsible for any damage caused by improper use or other purposes of use.

## PRECAUTION

- Only the qualified personnel having undergone special training can operate this machine. Without the permission of the manufacturer or not following the requirement of the manual, any changes in the machine part and in the usage scope may cause direct or indirect damage to the machine.
- Don't keep the lift in the extreme temperature and humidity environment. Avoid installation beside the heating equipment, water tap, air humidifier or stove.
- Prevent the lift from contacting large amount of dust, ammonia, alcohol, thinner or spray adhesive, and prevent it from rain shower.
- During the machine operation, non-operators should be kept away from the machine.

- Inspect machine daily ,do not use lift with damaged parts or being damaged .Use original components to replace damaged parts
- The lift can't be overloaded. The rated load of the lift is already marked on the nameplate.
- Please don't raise the lift when there are people in the vehicle. During the operation, the customer and spectators shouldn't stand in the lifting area.
- Keep the lifting area free from obstacle, grease, machine oil, garbage and other impurities.
- Position the swing arm of the lift, making it contact the lifting point as recommended by the manufacturer. Raise the carriage and confirm the lifting pad and vehicle are closely contacted. Raise the carriage to the appropriate working height.
- For some vehicles, the parts dismantling (or installation) will cause severe deviation of the center of gravity, leading to unstable vehicle. The support is needed to keep the balance of the vehicle.
- Before moving the vehicle away from the lifting area, please position the swing arm and lifting pad back away to avoid blockage during the movement.
- Use appropriate equipment and tools as well as safety protection facilities, e.g. working uniform, safety boot, etc.
- Pay special attention to various safety marks attached to the machine body.
- Keep hair, loose clothing, fingers, and all parts of body away from moving parts
- Pay special attention not to dismantling the safety unit of the machine or making it not functioning.
- The hydraulic oil used for this lift is N32 or N46. Please refer the safety data of grease and oil shown in the manual.
- Let components cool down before storage, loosen component cables completely in storage
- Do not install lift in the open air or expose to rain, special requirements should be offered to manufacturer if it can't be avoided.

## Caution Labeling Exemplification

- (1) Read operating and safety manuals before using lift!



- (2) Proper maintenance and inspection are necessary for safe operation!



- (3) Do not operate a damaged lift!



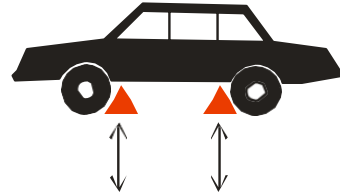
- (4) Lift can be used by trained operators ONLY!



- (5) Only Authorized personnel can be in the lift area!



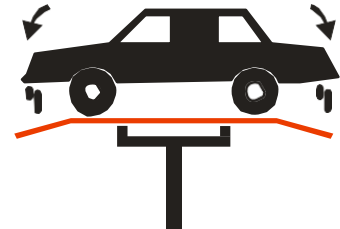
- (6) Use vehicle manufacturer's lifting points!



- (7) Use bracket to help disassembly or installation!



- (8) Auxiliary adapters would reduce load capacity!



- (9) Area should be unimpeded in case of vehicle overturn!



- (10) The central of gravity should be between two arms!



(11) Keep area clear when lifting and lowering machine!



(14) Keep feet away when lowering lift!



(12) Do not shake the vehicle on the lift!



(15) Do not stand under carrying arms or other load carrying device while lift is being operated with load!



(13) Do not lift single side of vehicle!



(16) Travelling on the load carrying devices is forbidden!



# Table of Contents

<b>1. Outline</b> .....	<b>1</b>
1.1 MODEL DESCRIPTION.....	1
1.2 PURPOSE.....	1
1.3 FUNCTIONS AND FEATURES.....	1
1.4 TECHNICAL SPECIFICATIONS.....	1
1.5 ENVIRONMENTAL REQUIREMENT.....	2
<b>2. Lift Structure</b> .....	<b>2</b>
2.1 LIFT STRUCTURES.....	2
2.2 MAIN STRUCTURE PRINCIPLES.....	5
<b>3 Operation Description</b> .....	<b>6</b>
3.1 PRECAUTIONS FOR VEHICLE REPAIR WORK.....	6
3.2 PREPARATION BEFORE OPERATION.....	6
3.3 INSPECTION BEFORE OPERATION.....	6
3.4 LIFTING THE VEHICLE.....	6
3.5 LOWERING THE VEHICLE.....	6
<b>4 Hydraulic and Electrical System of the Equipment</b> .....	<b>7</b>
4.1 HYDRAULIC SYSTEM OF THE LIFT.....	7
4.2 ELECTRICAL SYSTEM OF THE LIFT.....	9
<b>5 Solutions to FAQ</b> .....	<b>8</b>
<b>6. Repair and Maintenance</b> .....	<b>11</b>
<b>7. Storage and Scrap</b> .....	<b>12</b>
7.1 STORAGE.....	12
7.2 SCRAP.....	12
<b>8. Tools for Installation and Adjustment</b> .....	<b>13</b>
<b>9. Unpacking</b> .....	<b>13</b>
<b>10. Installation</b> .....	<b>13</b>

<b>10.1 IMPORTANT NOTICE</b> .....	<b>13</b>
<b>10.2 INSTALLATION PROCEDURE</b> .....	<b>13</b>
10.2.1 Selecting installation site .....	<b>13</b>
10.2.2 Base plate layout.....	<b>14</b>
10.2.3 Install the power side column .....	<b>15</b>
10.2.4 Install the floor plate, top beam .....	<b>16</b>
10.2.4.1 Install the top beam.....	<b>16</b>
10.2.4.2 Install the floor plate .....	<b>16</b>
10.2.5 Install the offside column .....	<b>17</b>
10.2.6 Install and adjust the balancing steel cables.....	<b>18</b>
10.2.7 Install the power unit and hydraulic lines .....	<b>19</b>
10.2.8 Install the swing arm.....	<b>21</b>
<b>11. . Lift Adjustment</b> .....	<b>21</b>
11.1 PREPARATION BEFORE THE ADJUSTMENT.....	<b>21</b>
11.2 ADJUSTMENT PROCEDURE .....	<b>21</b>
<b>12. . List of the Lift components</b> .....	<b>22</b>
<b>Grease and hydraulic oil for lift</b> .....	<b>31</b>

# 1. Outline

## 1.1 Model Description

Model	Description
TCE-245LD clear-floor 2-post lift	4.5T Economical clear-floor 2-post lift (Fig.1b、 Fig.2b)
TCE-245LC floor-plate 2-post lift	4.5T Economical symmetric floor-plate 2-post lift (Fig.1c、 Fig.2c)

## 1.2 Purpose

This machine is applicable for the lifting of various small and medium-sized vehicles with total weight below 4.5t in garage and workshop.

## 1.3 Functions and Features

- The cable and oil pipe are fully concealed, with decent and elegant appearance.
- Designed based on the international standard, meeting the demand of the garage and workshop.
- Top limit switch, effectively protecting the vehicle from overhead collision.
- Dual hydraulic cylinders drive, stable lifting and lowering.
- Manual lowering, safe and simple in operation.
- Adopt two steel cables for equalization, force two carriages to move synchronously, and effectively prevent the vehicle from tilting.
- Lowest height of lifting pad is 110mm, good for repairing low chassis or low profile car.

## 1.4 Technical Specifications

### Noise:

Working noise: ≤ 75dB (A)

### Power unit:

#### Working pressure:

- 18 MPa TCE-245LC
- 18 MPa TCE-245LD

#### Electrical parameters of the machine:

- TCE-245LC-110:Single phase :110V 60Hz 2.2KW
- TCE-245LC-220:Single phase :220V 60Hz 2.2KW
- TCE-245LD-110:Single phase :110V 60Hz 2.2KW
- TCE-245LD-220:Single phase :220V 50Hz 2.2KW

Basic parameters of the equipment:

Model	Rate dload	Lifting height	Rising time	Descending time	Net weight	Passing width	Machine width	Machine height
TCE-245LD	4500kg 10000lb	1920mm 75.59 in	≤55s	≥20s ≤40s	690kg 1521 lb	2486mm 97.9 in	3420mm 134.6 in	3840mm 151.2 in
TCE-245LC	4500kg 10000lb	1920mm 75.59 in	≤55s	≥20s ≤40s	645kg 1422 lb	2486mm 97.9 in	3370mm 132.7 in	2860mm 112.6 in

**Packing size:**

**TCE-245LC 2830x540x1074mm(111.5x21.3x42.3in)**

**TCE-245LD 2757x598x1092mm(108.6x23.6x42.3in)**

**1.5 Environmental Requirement**

Working temperature: -5°C ~ +40°C

Transport/storage temperature: -5°C ~ +40°C

Relative humidity: Temperature +30°C , Relative humidity 80%

Height above sea level: No more than 2000m

## 2. Lift Structure

### 2.1 Lift structures are shown as below:

Model		Description
TCE-245LD	clear-floor 2-post lift	4.5T Economical clear-floor 2-post lift (Fig.1a、 Fig.2a)
TCE-245LC	floor-plate 2-post lift	4.5T Economical symmetric floor-plate 2-post lift (Fig.1b、 Fig.2b)

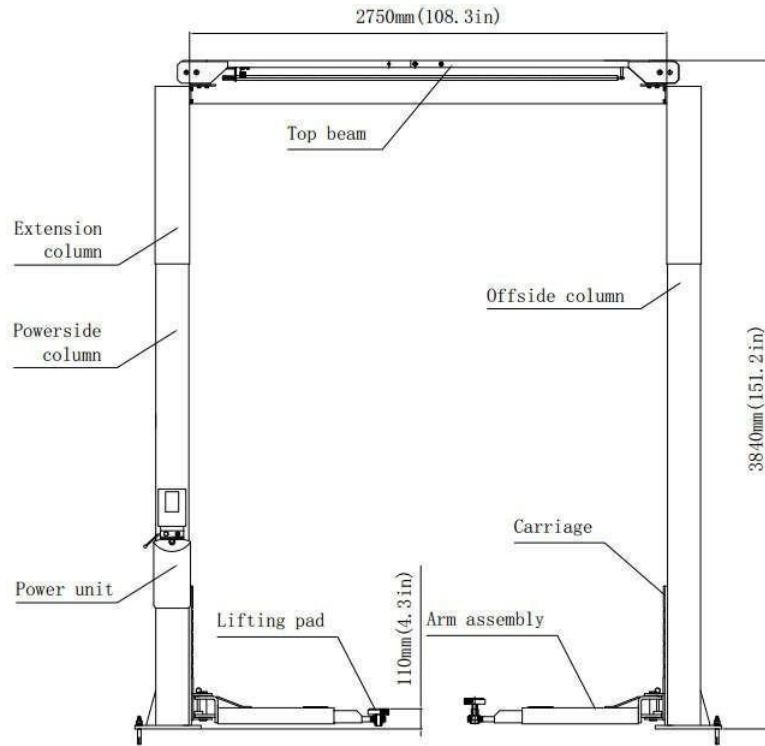


Fig.1a

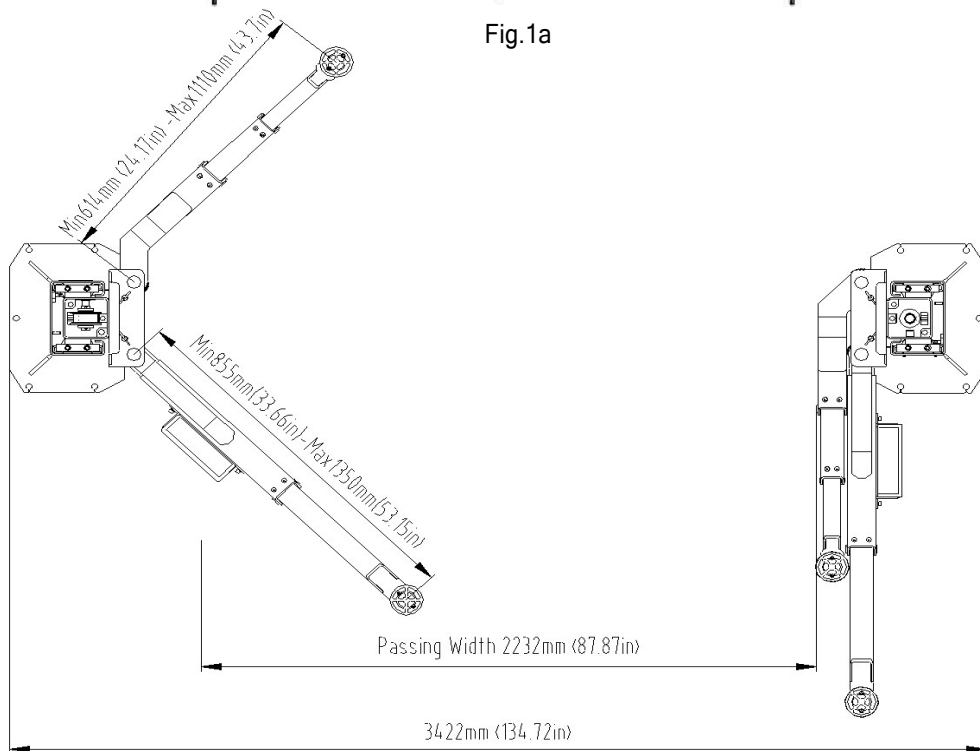


Fig.2a

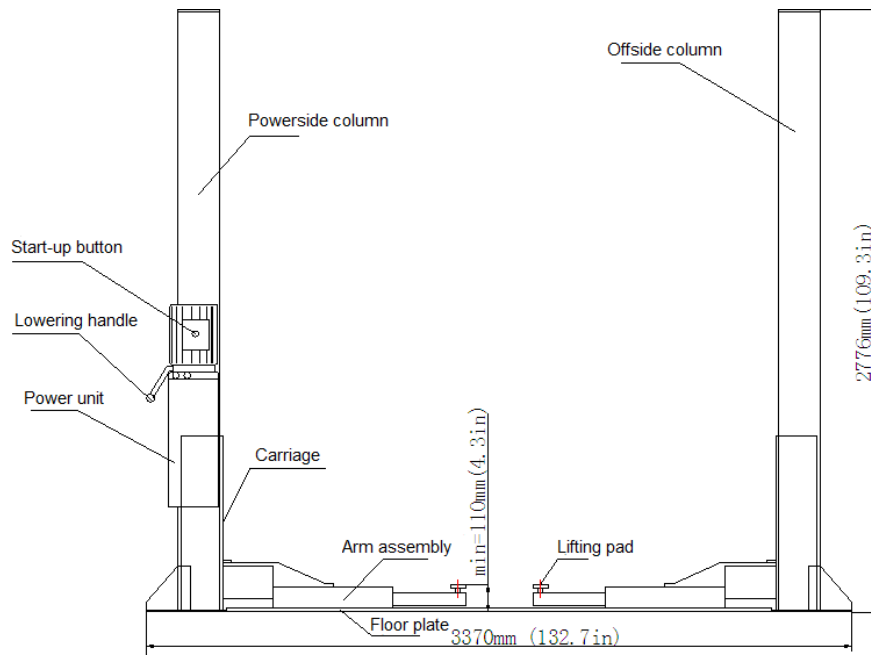


Fig.1b

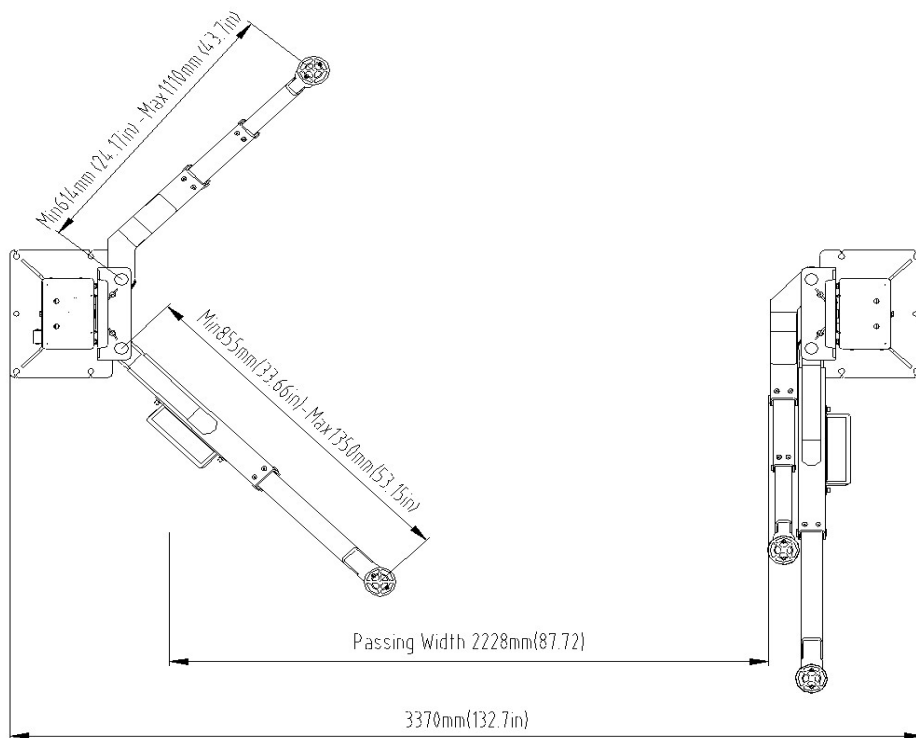


Fig.2b

## 2.2 Main structure principles:

- Lifting mechanism: Each column is installed with a hydraulic cylinder, when hydraulic oil is pressed from power pack into the lower chamber of main cylinder, piston rod moves upwards to drive the upward movement of carriage through leaf chain.
- Load supporting mechanism: When vehicle drives into the working area, adjust the angle and telescopic length of arms to make lifting pads at an effective load supporting position that contact with vehicle, and then adjust the lower screw's height of lifting pad to make it applicable for vehicles with different chassis.
- Balance mechanism: In order to keep machine balanced during lifting and lowering, two carriages are interconnected and forced to move synchronously by two wire ropes. If the right and left carriages and arms are not at the same level, adjust the end nut of wire rope and pull wire ropes tight to make arms leveled.
- Manual safety locking mechanism: the safety locking plates are installed on the two

carriages and the toothed bar plate is welded on the internal wall of the column. During the lifting of the carriage, the safety locking plate goes up against on the toothed bar plate under the tension of spring. When the carriage stops, the safety locking plate opens and then is engaged in the toothed bar slot to ensure the carriage will not go down; when the lowering operation is required, just raise the carriage upward a little to loosen the safety locking plate from the toothed bar slot, and then manually pull the steel wire rope to let sliding plate lift up the safety locking plate so that the safety locking is released, the carriage can be lowered down. Because the manual safety locking device are installed on the two carriages, double safety protection is provided; therefore, to disengage the safety locking, the steel rope on the two carriages shall be respectively pulled. To prevent the vehicle from slipping off, the swing arm assembly employs positioning mechanism, makes the swing arm capable of automatic locking during operation.

- Safety lock scope: Safety lock mechanism is effective when the front end of carriage is between 450mm and 1900mm high above the ground.

## 3 Operation Descriptions

### 3.1 Precautions for vehicle repair work

- Different vehicles have different center of gravity positions. First understand the position of center of gravity, and when the vehicle enters into the lift, make its center of gravity close to the plane formed by two columns. Use vehicle manufacture's lifting points!
- For vehicle lift with top beam, pay attention to the car roof position observation in order to avoid accident during lifting.
- Carefully read the warning symbol.
- The hydraulic valves have been adjusted before ex-factory, and the user can't make self-adjustment, otherwise it will be responsible for all the consequences generated.
- Based on the production, some specifications in the instruction manual are subject to change without notice.

### 3.2 Preparation before Operation

- Lubricate contact surface of the carriage with general-purpose lithium grease (GB7324-87). All sliding surface should be coated evenly from the top to bottom.
- Fill hydraulic oil N32 or N46 to the oil reservoir of the power unit.

### 3.3 Inspection before operation

- Check to see if the motor power is installed properly.
- Check to see if all the connection bolts are fastened.



**Note: Don't operate the lift with damaged cables or damaged and missing part, until it is inspected and repaired by the professionals.**

### 3.4 Lifting the Vehicle

- Keep work area clean; don't operate the lift in cluttered work area.
- Lower the carriage to the lowest position.
- Reduce the swing arm to the minimum length.
- Swing the arm along the route of the vehicle.
- Move the vehicle to the location between the two columns
- Swing the arm and put the lifting pad below the recommended lifting point, and adjust the height of lifting pad to touch lifting point of vehicle
- Press the UP button on the electric control box, slowly lift the vehicle to ensure the load balance, and then raise the lift to the required height.
- Release the UP button.
- Press the DOWN button to engage the safety lock of carriage. At this time, the vehicle can be repaired.



**Note:**

- ◇ **Before operation, the safety locking devices must be inspected. 1) The gear blocks of the arm end must engage the gear block of the restraint shaft. 2) No broken strand in the steel cable. 3) No deformation in the arm pad.**
- ◇ **When lifting the vehicle, all the swing arms must be used.**
- ◇ **Before lifting the vehicle, check all the hydraulic hose and fittings for oil leakage. In case of leakage, please don't use the lift. Remove the fitting with leakage and re-seal. Re-install the fitting and check if oil leakage still exists.**
- ◇ **After the vehicle is lifted, when adding or removing any major heavy object, use jack stand to maintain the balance of the vehicle.**

### 3.5 Lowering the Vehicle

- Clean the work area before lowering the vehicle.
- First press the start button to raise the vehicle a little, and then pull two steel ropes on two carriages to disengage the safety lock.
- Press the lowering handle to lower the vehicle.
- Lower the vehicle till the swing arm down to the bottom and the lifting pads leave the vehicle chassis, and then release the lowering handle.
- The swing arms under the vehicle must be fully shrunk

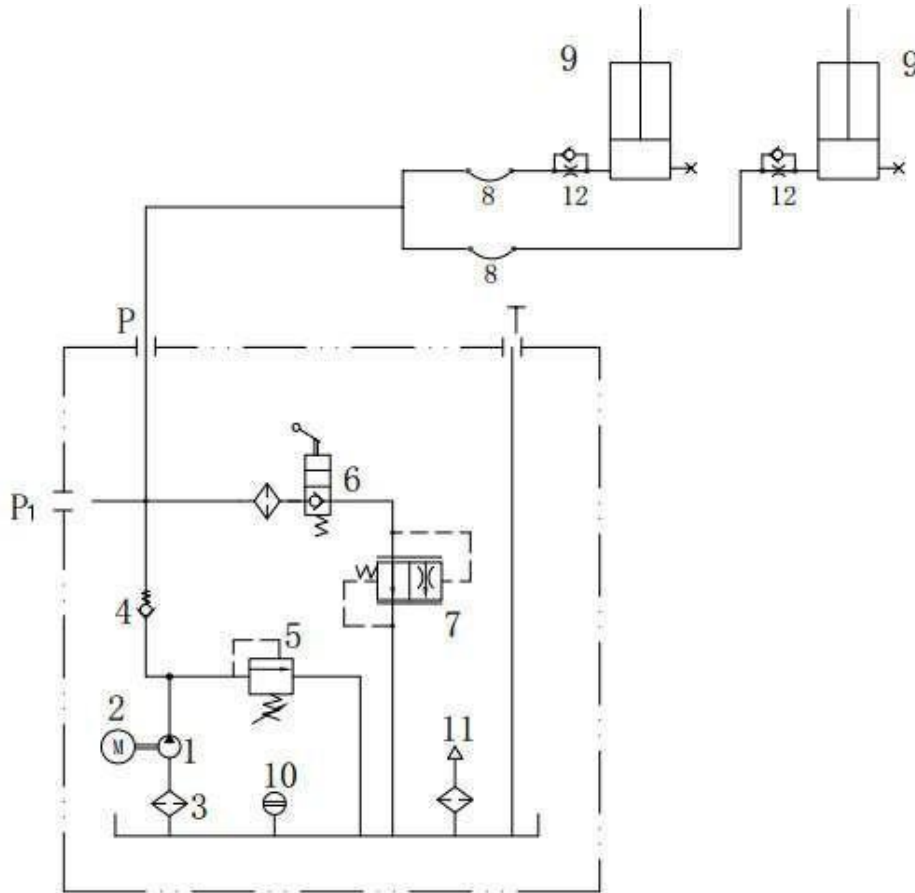


**Note: When the lift doesn't work, you must switch off the power.**

## 4 Hydraulic and Electrical System of the Equipment

### 4.1 Hydraulic System of the Lift

#### Diagram of the hydraulic system of clear-floor 2-post lift



1-Gear pump, 2-Motor, 3-Oil filter, 4-Check-valve, 5-Safety valve, 6-Lowering handle valve, 7-Servo flow-control valve, 8-High-pressure hydraulic hose, 9-Hydraulic cylinder, 10-Level gauge, 11-Air filter, 12-Throttle valve(for CE and customization)

Fig 4a

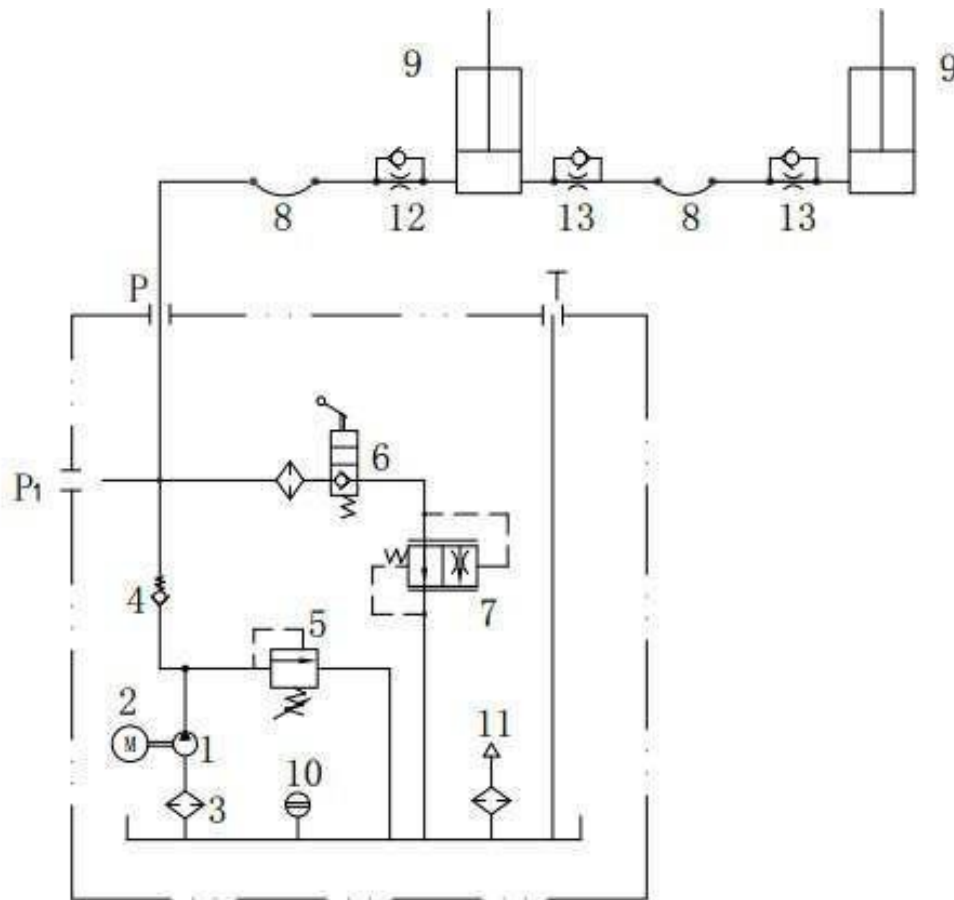
- 1- Gear pump, 2- Motor, 3- Oil filter, 4- Check-valve, 5- Safety valve, 6- Lowering handle valve, 7- Servo flow-control valve, 8- Hose, 9- Hydraulic cylinder, 10- Level gauge, 11- Air filter

#### The working principle of the hydraulic system is as follows:

As shown in Fig.4a, when the start button is pressed, the motor 2 is activated, driving the oil pump 1, sucking the hydraulic oil from the oil tank into the oil cylinder 9, forcing the piston rod move. At this time, the safety valve 5 is closed. (The max working pressure is already adjusted before ex-factory. The safety valve can ensure the capacity of the rated load, but when the pressure in the system

exceeds the limit, automatic overflow will happen inside safety valve to protect the hydraulic system). Release the start button to stop the oil supply and the lifting will stop. For lowering, first start Motor 2 to raise vehicle a little, pull the steel ropes on two carriages to release the safety lock mechanism, then press the lowering handle, the valve 6 is actuated, the hydraulic oil flows back and the lift starts lowering.

### Diagram of the hydraulic system of floor-plate 2-post lift



1-Gear pump, 2-Motor, 3-Oil filter, 4-Check-valve,  
 5-Safety valve, 6-Lowering handle valve,  
 7-Servo flow-control valve, 8-High-pressure hydraulic hose,  
 9-Hydraulic cylinder, 10-Level gauge, 11-Air filter,  
 12-Throttle valve(for CE and customization)  
 13-Short throttle valve(for CE and customization)

Fig.4b

1- Gear pump, 2- Motor, 3- Oil filter, 4- Check-valve, 5- Safety valve, 6- Lowering handle valve,  
 7- Servo flow-control valve, 8- Hose, 9- Hydraulic cylinder, 10- Level gauge, 11- Air filter

#### The working principle of the hydraulic system is as follows:

As shown in Fig.4b, when the start button is pressed, the motor 2 is activated, driving the oil pump 1, sucking the hydraulic oil from the oil tank into the oil cylinder 9, forcing the piston rod move. At this time, the safety valve 5 is closed. (The max working pressure is already adjusted before ex-factory. The safety valve can ensure the capacity of the rated load, but when the pressure in the system

exceeds the limit, automatically overflow will be happened inside safety valve to protect the hydraulic system). Release the start button to stop the oil supply and the lifting will stop. For lowering, first start Motor 2 to raise vehicle of 5~10mm, pull the steel ropes on two carriages to release the safety lock mechanism, then press the lowering handle, the valve 6 is actuated, the hydraulic oil flows back and the lift starts lowering.

## 4.2 Electrical System of the Lift

Diagram of electrical system for single phase motor

110V1PH ( 24V ) /220V1PH ( 24V )

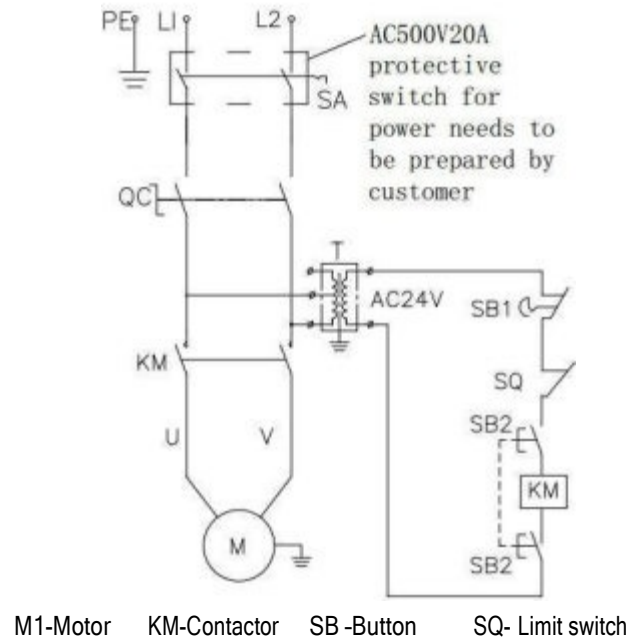


Fig. 5a

The electrical working principle is as follows:

Press the start button (SB), and the contactor (KM) will be powered; motor (M) is energized to drive the gear pump supplying oil to push the carriage upward; release the start button, and the contactor (KM) is open, then the motor (M) will lose the power, so the carriage will stop rising. As for

the clear-floor lift, if the vehicle is lifted up near the top and contacts the limit switch on the top beam, the contactor (KM) will open, then the motor (M) will lose the power, so that the carriage stops lifting to avoid hitting the top. Emergency stop button has the function of emergency power-off.

## 5 Solutions to FAQ

Symptom	Reason	Solution
Motor does not work	<ul style="list-style-type: none"> <li>◆ Check the circuit breaker or thermal relay for tripping</li> <li>◆ Check the voltage to the motor</li> <li>◆ Check the electrical wiring</li> <li>◆ Limit switch is failed</li> <li>◆ Motor wire is burnt</li> </ul>	<ul style="list-style-type: none"> <li>◆ Close the switch of circuit breaker or press the blue reset key of thermal relay</li> <li>◆ Supply correct voltage for motor</li> <li>◆ Correctly wiring as electrical system diagram</li> <li>◆ Replace the limit switch</li> <li>◆ Replace the motor</li> </ul>
Motor is running, but the lift can't be raised.	<ul style="list-style-type: none"> <li>◆ Motor rotation reversed</li> <li>◆ Lowering valve body open.</li> <li>◆ Hydraulic pump sucks the air</li> <li>◆ Suction tube is separate from the hydraulic pump</li> <li>◆ Low oil level</li> </ul>	<ul style="list-style-type: none"> <li>◆ Change the motor rotating direction through changing wire connection.</li> <li>◆ Repair or replace the lowering valve body</li> <li>◆ Fasten all the suction pipe fittings</li> <li>◆ Replace the suction tube</li> <li>◆ Add the oil into the oil tank</li> </ul>
Motor is running, the lift can be raised without load, but the vehicle can't be raised	<ul style="list-style-type: none"> <li>◆ Motor is running under low voltage</li> <li>◆ Impurities inside the lowering valve body</li> <li>◆ Regulation pressure of safety valve is incorrect</li> <li>◆ Lift is overloaded</li> </ul>	<ul style="list-style-type: none"> <li>◆ Supply correct voltage to the motor</li> <li>◆ Remove impurities from the lowering valve body.</li> <li>◆ Adjust the safety valve</li> <li>◆ Check the weight of the vehicle</li> </ul>
The lift is lowering slowly without pressing the lowering handle	<ul style="list-style-type: none"> <li>◆ Impurities on the lowering valve body.</li> <li>◆ External oil leakage</li> </ul>	<ul style="list-style-type: none"> <li>◆ Clean the solenoid valve body</li> <li>◆ Repair the external leakage</li> </ul>
The lifting speed is slow or oil flows out of the oil fill cap	<ul style="list-style-type: none"> <li>◆ Air and oil is mixed</li> <li>◆ Air and oil suction are mixed</li> <li>◆ Oil return pipe is loosened</li> </ul>	<ul style="list-style-type: none"> <li>◆ Replace the hydraulic oil</li> <li>◆ Fasten all the suction pipe fittings</li> <li>◆ Re-install the oil return pipe</li> </ul>
The lift can't rise horizontally	<ul style="list-style-type: none"> <li>◆ Balance cable is not adjusted properly</li> <li>◆ The lift is installed on the slop floor</li> </ul>	<ul style="list-style-type: none"> <li>◆ Adjust the balance cable to the proper tension</li> <li>◆ Shimming the columns to level the lift (no more than 5mm), if exceeding 5mm, pour new concrete floor and make it leveled. Refer to installation description.</li> </ul>
Anchor bolt is not fastened	<ul style="list-style-type: none"> <li>◆ Hole is drilled too big</li> <li>◆ Concrete floor thickness or fastening force is insufficient .</li> </ul>	<ul style="list-style-type: none"> <li>◆ Pour the fast curing concrete into the big hole and reinstall the anchor bolt , or use new drill to drill the hole for re-positioning the lift</li> <li>◆ Cut open the old concrete and make new concrete slab for the lift. Refer to installation description.</li> </ul>

## 6. Repair and Maintenance

### Keep clean

- This unit should be cleaned with dry cloth frequently to keep it clean. Before cleaning, first switch off the power to ensure the safety.
- The working environment of this unit should be clean. In case of dust in the working environment, it will speed up the parts wearing and shorten the service life of the lift.

### Every day:

- Before the operation, carefully check the safety mechanism of the lift to ensure the electromagnet suction and release action is proper, and the safety plate is in good condition. When finding any abnormal situation, make adjustment, repair or replacement immediately.
- Check to see if the steel cable connection is proper, and if the tension is at the optimum status.
- Check to see if the connection between hydraulic cylinder and carriage is proper, if the connecting nut between the steel chain and carriage is loose or falling. Refer to Fig.6

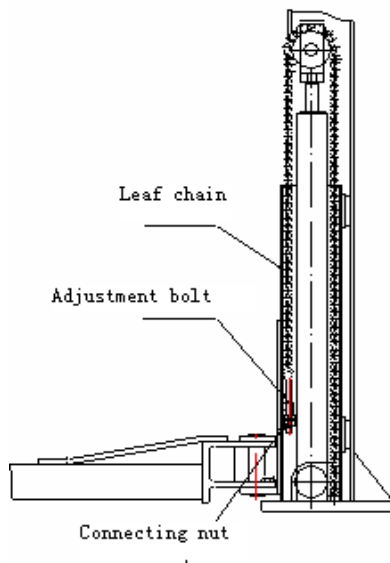


Fig.6

### Every month:

- Retighten the anchor bolts.

- Lubricate chains/cables.
- Check all the chain connectors, bolts and pins to ensure correct installation
- Check all the hydraulic lines for wearing
- Check to see if the carriage and the inner side of the column are properly lubricated. Use high-quality heavy lubrication grease (lithium based lubrication grease GB7324-87).

**⚠ Note: All the anchor bolts should be tightened completely. If any screw doesn't function for some reason, the lift can not be used until the bolt is replaced**

### Every six months:

- Check all the movable parts for possible wearing, interference or damage.
- Check the lubrication of all the pulleys. If the pulley has dragging during the lifting and lowering, add appropriate lubricant to the wheel axle.
- When necessary, check and adjust the balancing tension to ensure the horizontal lifting and lowering.
- Check the verticality of the column.

**⚠ Note: The inner corner of each column should be lubricated with lubricant, to minimize the roller friction and ensure the smooth and even lifting.**

### Maintenance of hydraulic system:

- Clean and oil change  
In the six months after initial use of this unit, clean the hydraulic oil tank and replace the oil, later clean the hydraulic system once a year, and replace the oil. See Fig. 7
- Replace the seal  
After this unit is put into operation for certain period, if finding the oil leakage, carefully check it; if the leakage is due to the wearing of sealing materials, immediately replace the worn one based on the original spec. See Fig. 7

Diagram of hydraulic line of clear-floor 2-post lift

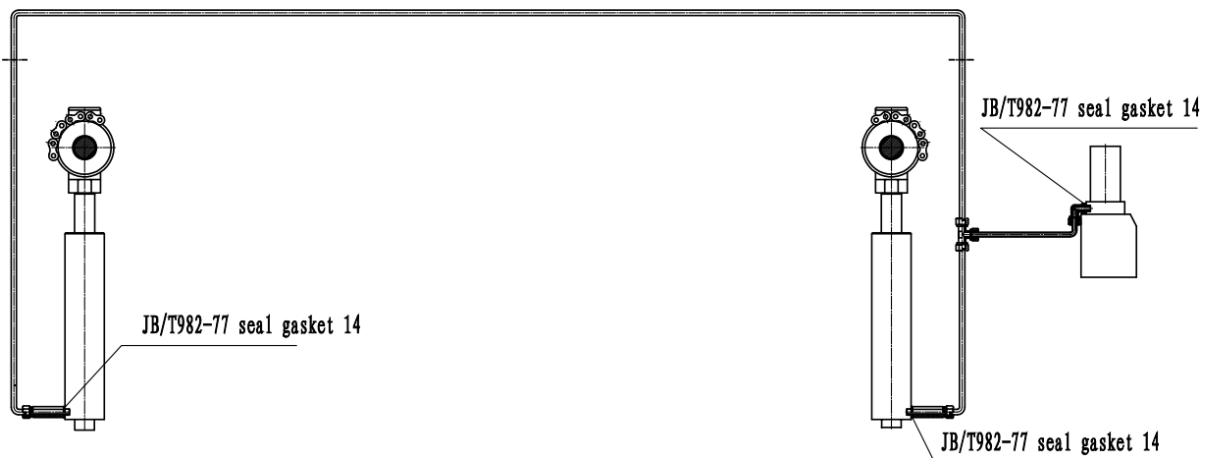


Diagram of hydraulic line of floor-plate 2-post lift

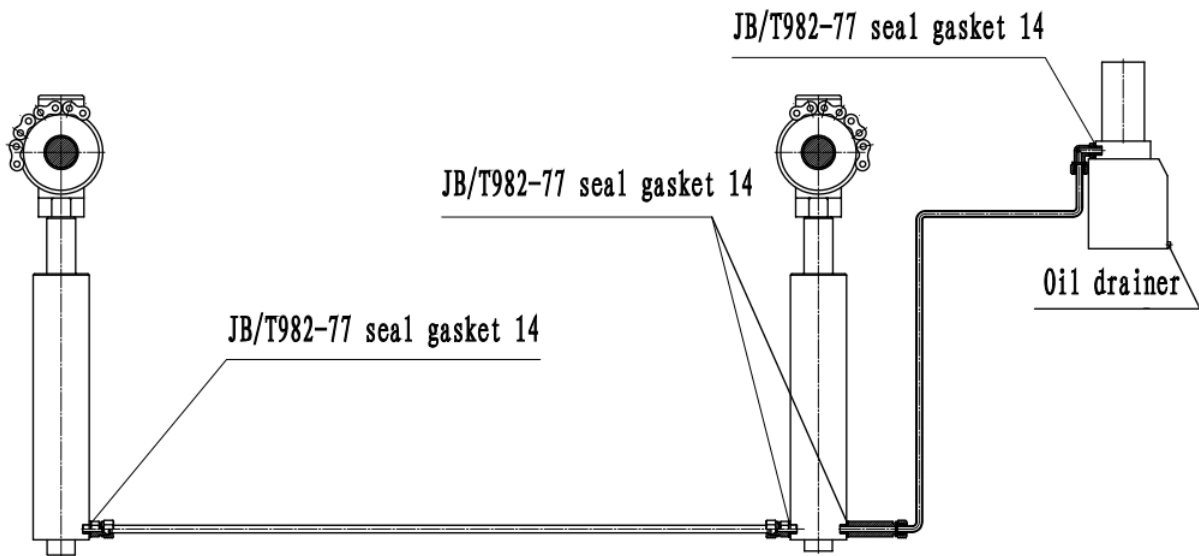


Fig. 7

## 7. Storage and Scrap

### 7.1 Storage

When the equipment requires long-time storage:

- Disconnect the power supply
- Lubricate all the parts requiring lubrication: mobile contact surface of the carriage, etc.
- Empty all the oil/liquid storage units

- Put the plastic cover over the equipment for dust protection

### 7.2 Scrap

When the equipment service life is expired and can no longer be used, disconnect the power supply, and properly dispose of as per relevant local regulations.

## 8. Tools for Installation and Adjustment

To ensure proper installation and adjustment, please prepare the following tools:

Tool	Model
Leveling instrument	Carpentry type
Chalk line	Min 4.5m
Hammer	1.5kg
Medium crescent wrench	40mm
Open-end wrench set	11mm-23mm
Ratchet socket set	
Flat Screw driver	150mm
Rotary hammer drill	20mm
Concrete drill-bit	∅ 19mm

## 9. Unpacking

Open the packing box; remove the packing materials and inspect the lift for any sign of shipment damage. Check by packing list to see if the main parts and accessories are complete.

Keep the packing materials away from the children to avoid danger; if the packing materials cause the pollution, they shall be treated properly.

## 10. Installation

### 10.1 Important notice

- The wrong installation will cause the lift damage or personal injury. The manufacturer will not undertake any responsibilities for any damage caused due to incorrect installation and usage of this equipment, whether directly or indirectly.
- The correct installation location shall be “horizontal” floor to ensure the horizontal lifting. The slightly slope floor can be corrected by proper shimming. Any big slope will affect the height of the lifting pad when at the bottom or the horizontal lifting. If the floor is of questionable slope, consider a visual inspection, or

pour a new horizontal concrete slab if possible. In short, under the optimum horizontal lifting status, the level of the lifting relies on the level of the floor where it is installed. Don't expect to compensate for the serious slope.

- Don't install the lift on any asphalt surface or any surface other than concrete. The lift must be installed on concrete floor conforming to the minimum requirement showed in this manual. Don't install the lift on the concrete with seams or crack and defect. Please check together with the architect.
- Without the written approval of the architect, don't install the lift on a second floor with basement.
- Overhead obstruction: The lift installation area can't have any overhead obstruction, such as heater, building support, electrical pipe, etc.
- Concrete drilling test: The installation personnel can test the concrete thickness at each site by drilling test. If several lifts are installed at one place, it is preferred to make drilling test in each site.
- Power supply: Get ready the power supply before the installation. All the electric wiring and connecting should be performed by a certified electrician.

### 10.2 Installation Procedure

#### 10.2.1 Selecting installation site

Selecting installation site based on the following conditions:

- Lift can only be installed on concrete slab, which must have a minimum thickness of 250mm and should be aged 7days at least.
- The concrete slab shall have reinforcement by steel bar.
- The concrete slab must be leveled.
- If the thickness of the whole ground concrete is greater than 250mm, the lift can be installed directly
- Check the possible obstruction, e.g. low ceiling, top pipeline, working area, passage, exit, etc.
- The front and back of the lift should be reserved with sufficient space to accommodate all the vehicles (Fig. 8).(evaluating from the center line ,each edge should be about 4m)

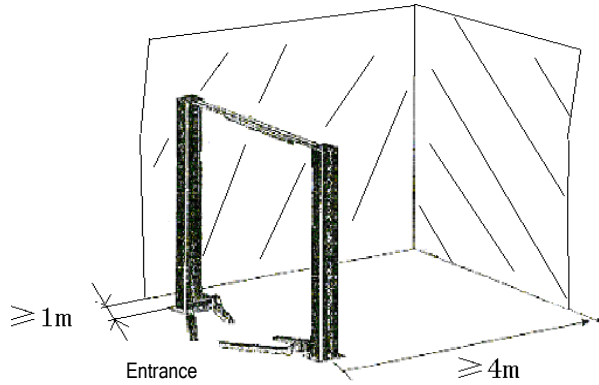


Fig. 8

**10.2.2 Base plate layout**

TCE-245LD symmetric installation is shown in Fig. 9a,  
TCE-245LC symmetric installation is shown in Fig.9b:

- With total width (A) as the basis, draw two parallel

lines (#1 and #2) on the concrete slab, with the error within 3mm.

- Determine the power side column location on any chalk line, and mark the total width (B) of the base plate. Mark the points 3 and 4.
- Starting from point 3, draw one diagonal line (C), forming a triangle. In this way, the vertical lines can determine the location of the two columns.

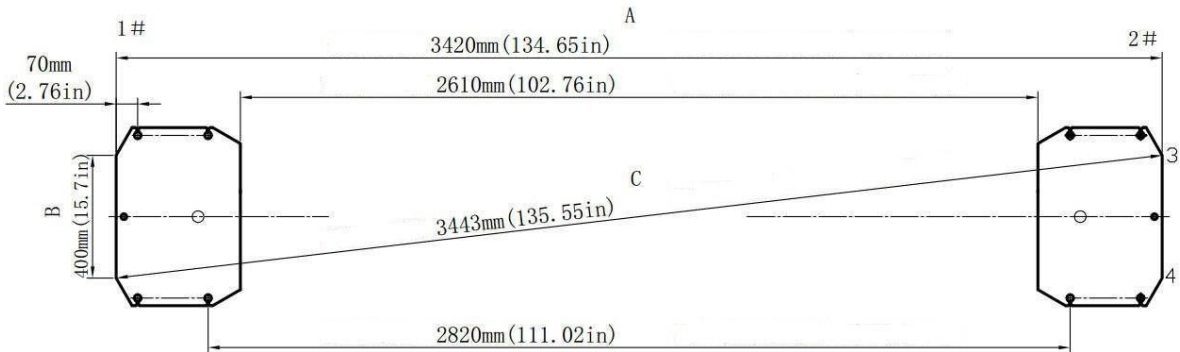


Fig.9a

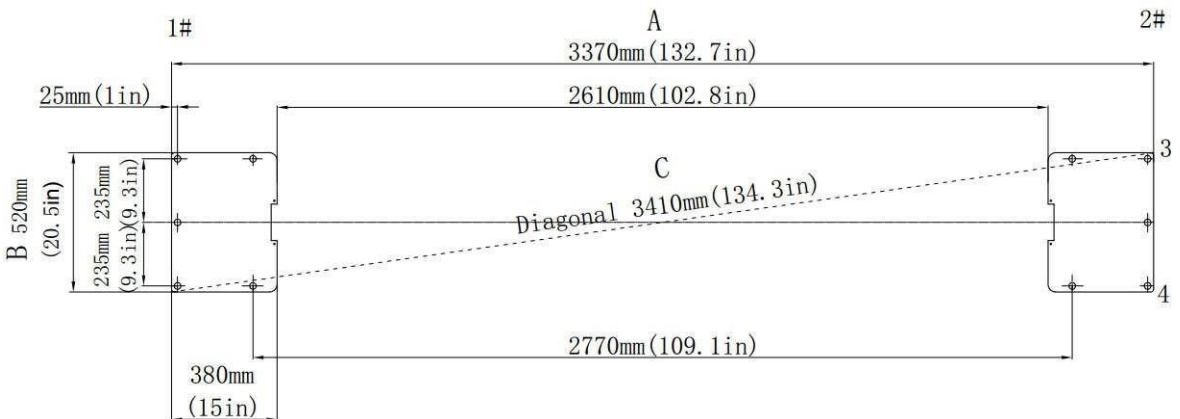


Fig.9b

**⚠ Note:**

- **All the dimensions are based on the external border of the base plate.**
- **Ensure the overall error is controlled within 6mm. In this way, the difficulties in the final assembly, or early wear or non-alignment of the chain can be eliminated. The marking and layout is very important. If it is inaccurate, there will be problems during the final assembly and operation.**

**10.2.3 Install the power side column**

For clear-floor two post lift, first install extension column with column, then use lifting equipment to place power side column upper right to the location. Align the base plate of column with the chalk line layout. Guided by holes on the base plate of the column, used 5 concrete anchor bolts to fix it onto the ground. Drill and install anchor bolts at one time, during the drilling process, ensure no movement of the column. (Fig.11a).

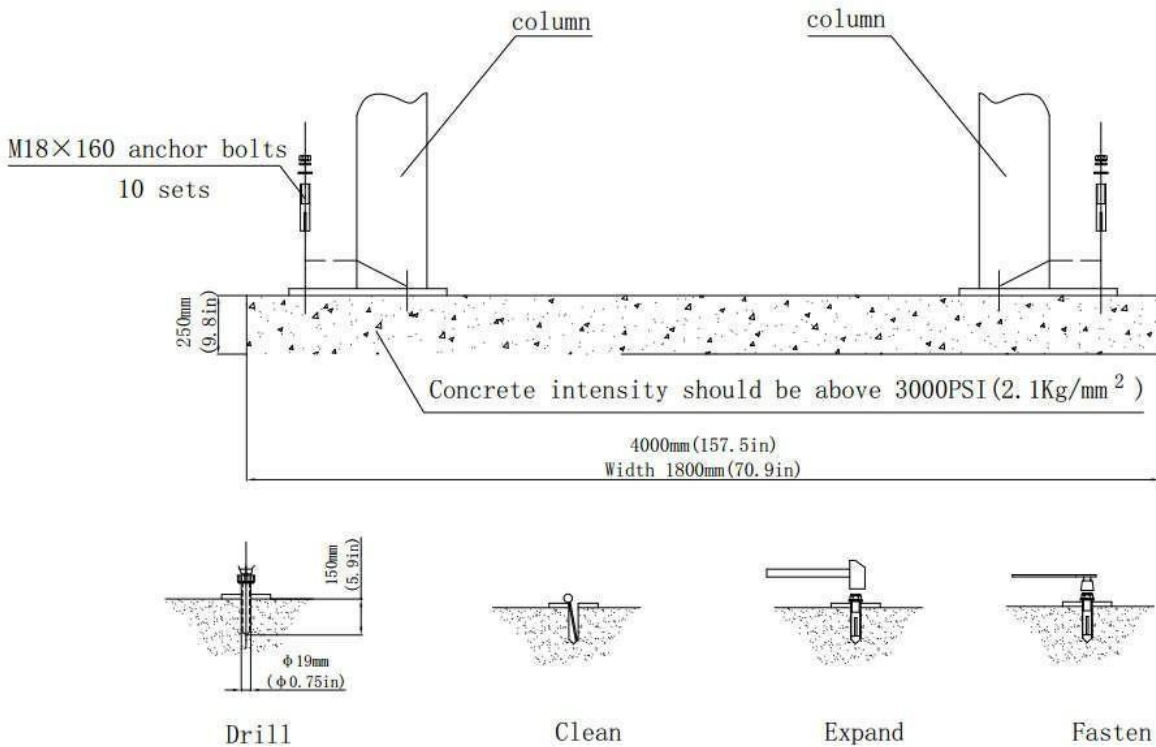


Fig.11a

For floor-plate two post lift, use lifting equipment to place power side column upper right to the location. Align the base plate of column with the chalk line layout. Guided by holes on the base plate of the

column, used 5 concrete anchor bolts to fix it onto the ground. Drill and install anchor bolts at one time, during the drilling process, ensure no movement of the column. (Fig.11b).

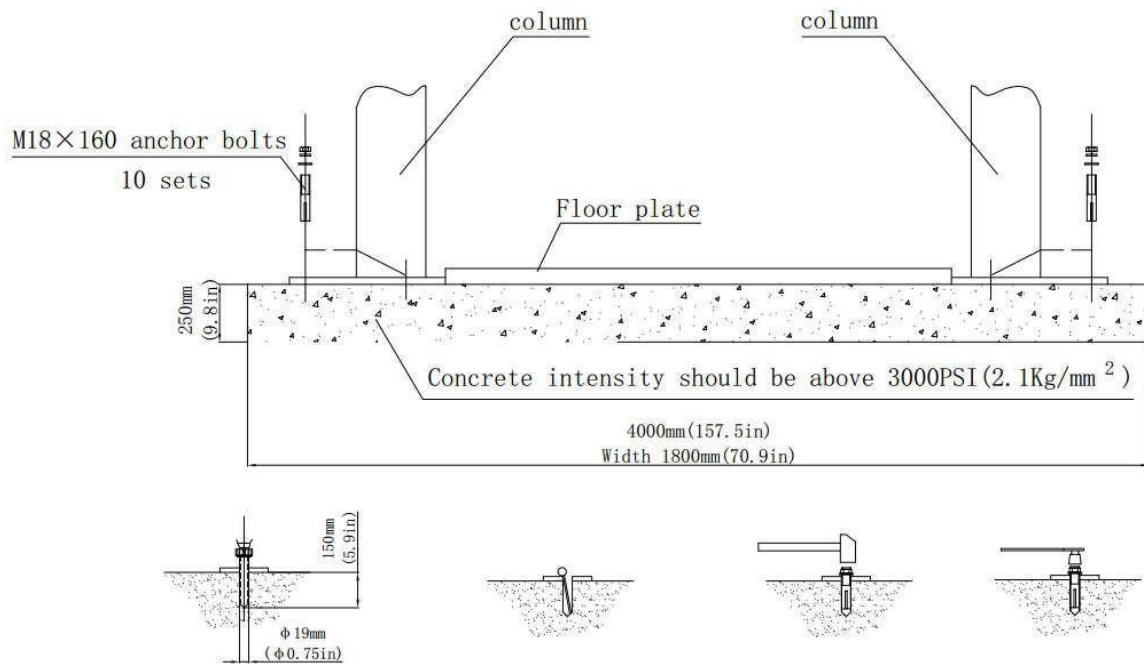


Fig.11b


**Note:**

- ◆ **Use sharp  $\Phi 19\text{mm}$  concrete drill-bit to drill the holes so as not to drill the hole too large. Use proper pneumatic tool to remove the dust from the hole. The depth of the hole is the same as that of the anchor bolt. Insert the anchor bolt and make the washers lean against the base of the column.**
- ◆ **Only use torque wrench instead of impact tools to fasten anchor bolts.**
- ◆ **Insert proper steel shim under the base seat of column to plumb the column.**



**Note: The thickness of shims shouldn't exceed 5mm.**

To get the correct and safety installation, please follow the following installation steps.

- Wear the safety goggles
- Use hard alloy drill-bit.
- Don't use the drill-bit with wearing exceeding the tolerance.
- The drill and concrete surface should be kept perpendicular.
- Let the drill work itself. Don't apply the extra force, and don't ream the hole or allow the drill to wobble.
- The drilling depth of hole is based on the length of anchor bolt. The distance from the bolt head to the concrete floor should be more than twice of the bolt

diameter.

- Remove the dust from the hole.
- Gently tap the bolt into the hole till the washer rests against the base plate of column.
- Fasten bolts

#### 10.2.4 Install the floor plate, top beam

##### 10.2.4.1 Install the top beam

Position the offside column at the designated chalk location. Lift the top beam to its high position, and use four M12 bolts, washers and lock nuts to fix it with the columns (as shown in Fig.12). When installing the top beam, ensure the above micro switch support bracket adjacent to the power side column. In Fig12: The symmetric top pulleys are to be installed at position 1、1", asymmetric top pulleys are to be installed at position 2、2".

##### 10.2.4.2 Install the floor plate

Position the offside column at the designated chalk line location, carefully making the base align with the chalk line layout. Insert the floor plate into the U gaps of the base seat of two columns.



**Note:**

✧ Since the offside column is not fixed to the ground, you must operate carefully to avoid the falling of the column.

✧ The wire protective pipe on the floor plate must be in same direction with the pipe on the column near the base. And the floor plate would be placed in front position.

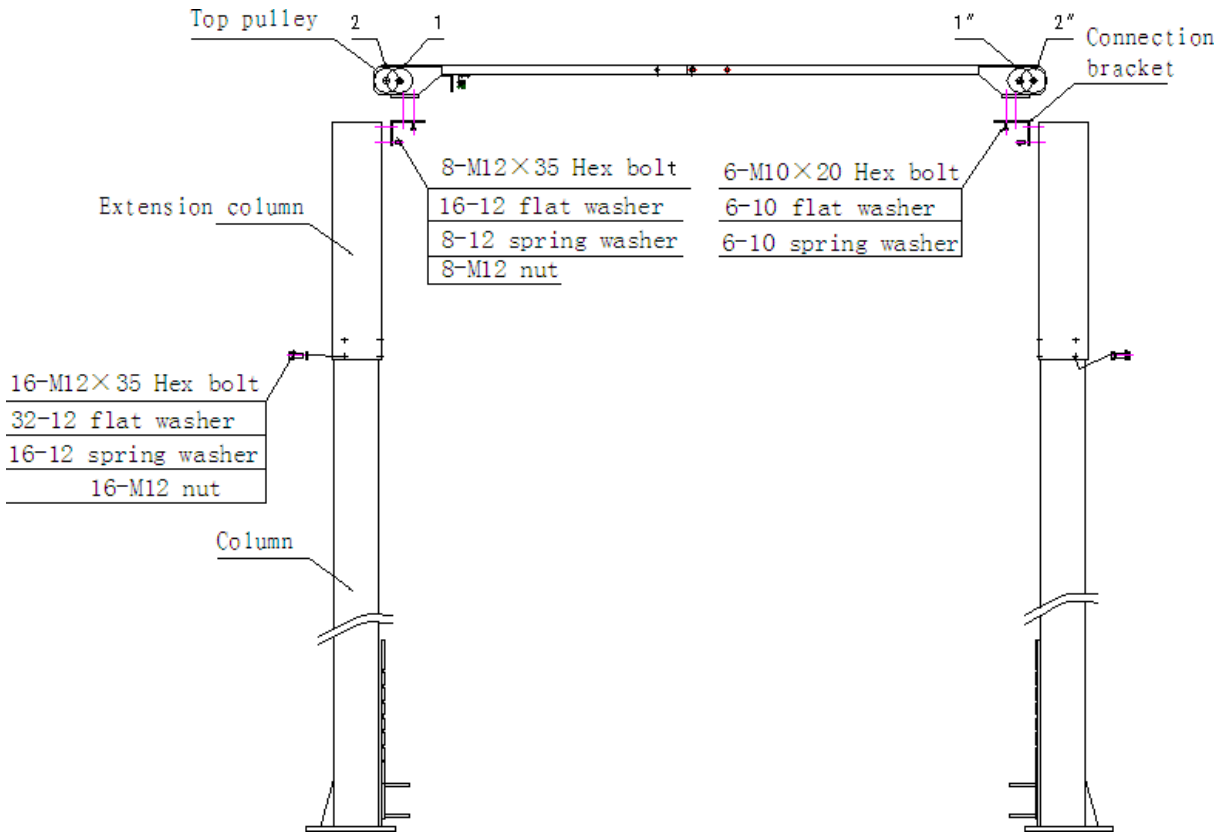


Fig.12

**10.2.5 Install the offside column**


Install the offside column as the procedures in 10.2.3.

**10.2.6 Install and adjust the balancing steel cables**

- Raise the two carriages to the safety locking position; make sure the two carriages are of the same height from ground. For TCE-245LD models, route the steel cables as Fig. 13a

shows ,for TCE-245LC models, route the steel cables as 13b shows..

- Adjust the tension of cables through the adjustment nuts on each end of steel cable. The steel cables should be tight in equal tension. Each steel cable should be ensured in the pulley when adjusting tightly, otherwise the steel cable will be damaged.

 **Note :** *Before operating the lift, re-check the balancing steel cables and ensure they are not crossing or wrongly installed. Ensure the steel cables still in the pulley.*

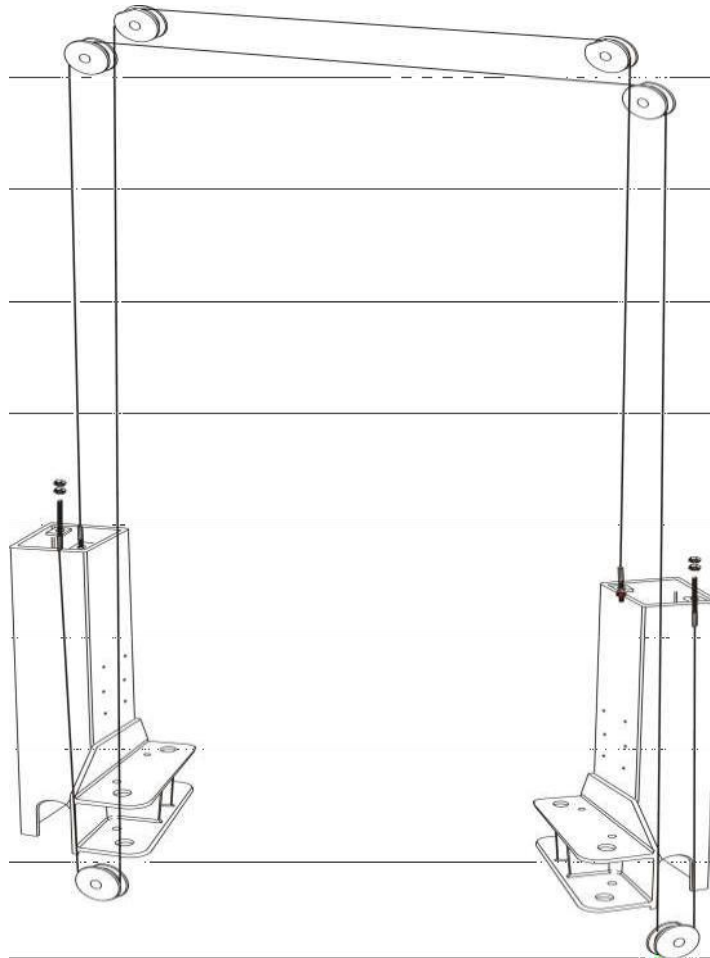


Fig.13a

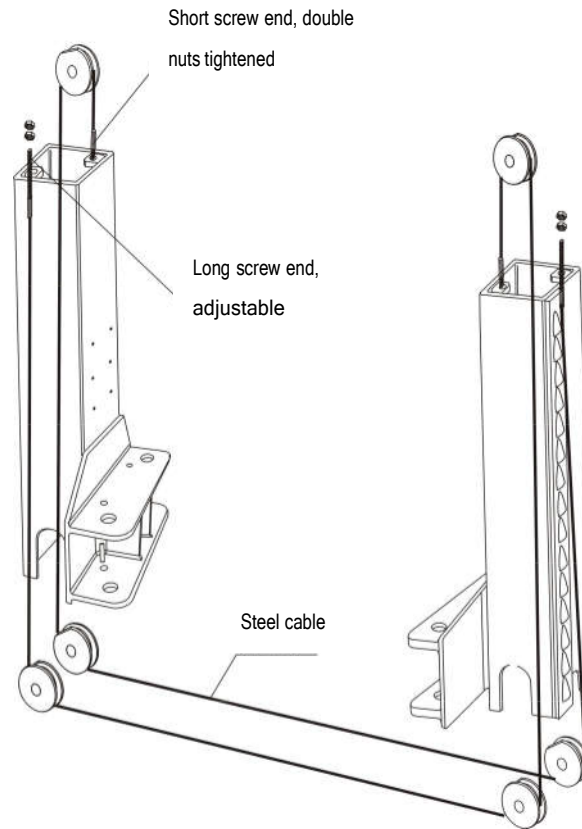


Fig.13b

✧ **The two steel cables shall be adjusted to certain uniform tension to ensure the two carriages are moving synchronously.**

- prevent oil leakage.
- Fill the reservoir with hydraulic oil (oil capacity of 10L). Operate carefully to avoid dust and other pollutants mixed with the hydraulic oil.

### 10.2.7 Install the power unit and hydraulic lines

- Firstly, please loosen these 4 M6 screws on the column, and then have the pumping station installed directly into the column through the special-shaped hole on the motor mounting plate. For TCE-245LD models, install the hydraulic line as shown in Fig. 14a, for TCE-245LC models, install the hydraulic line as shown in Fig. 14b and tighten all the fittings to

**Note :**

- ◆ **Clean the impurities in the hydraulic line and remove the protective plug from the hydraulic cylinder.**
- ◆ **When the hydraulic hose installation needs to go through the column, ensure the hydraulic hose won't touch any movable parts inside the column**
- ◆ **During the installation, rubber cushions must be added between the hydraulic station and the installation plate**

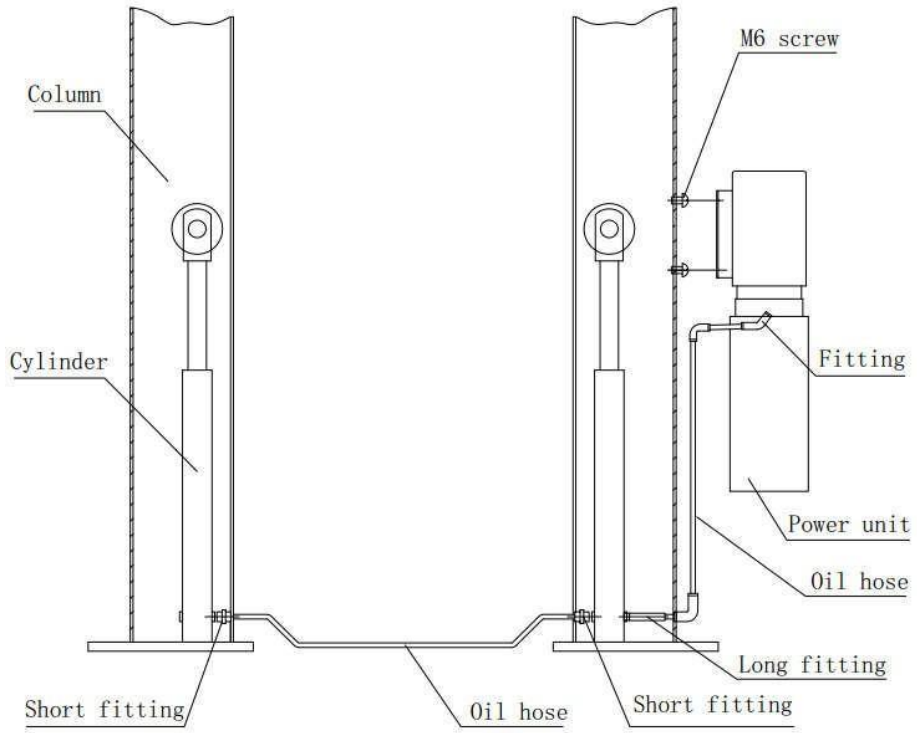


Fig 14.a

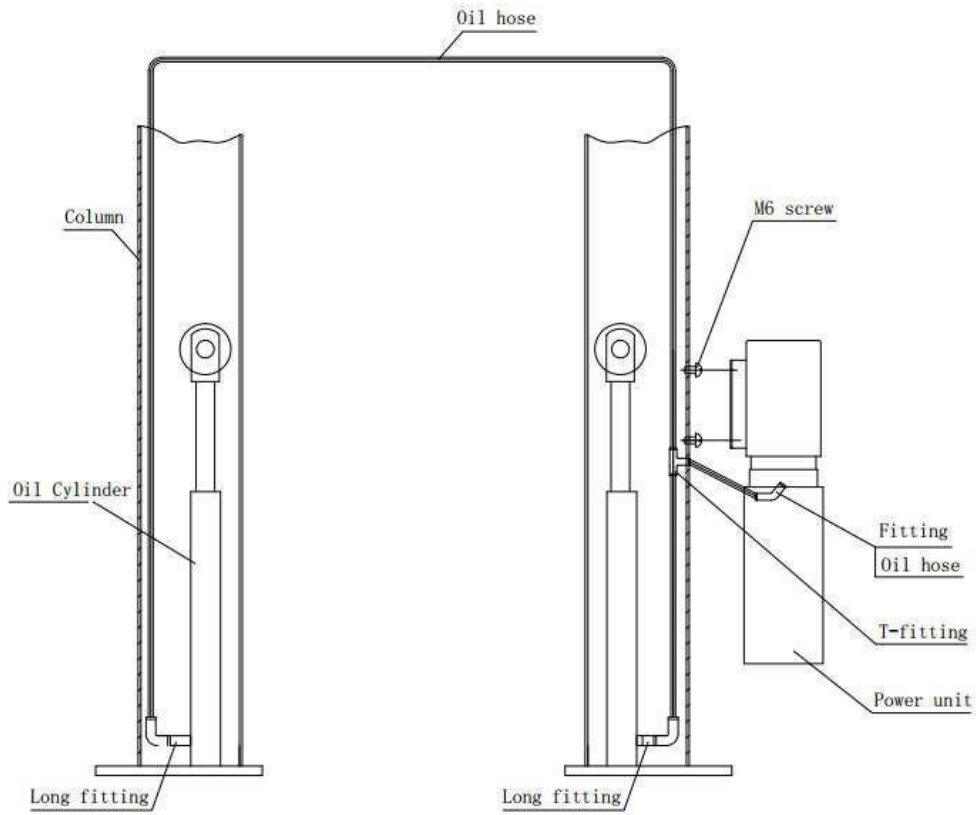


Fig 14.b

### 10.2.8 Install the swing arm

Install the swing arm as shown In Fig.15



**Note:**

*Before use, check if the positioning gear mechanism at the end of arm fits, adjust the screws of fixed semi-gear for its fitness.*

*During the installation, lubricate the moving parts of swing*

*arm and carriage if accessory, so that the swing arm can*

*move freely.*

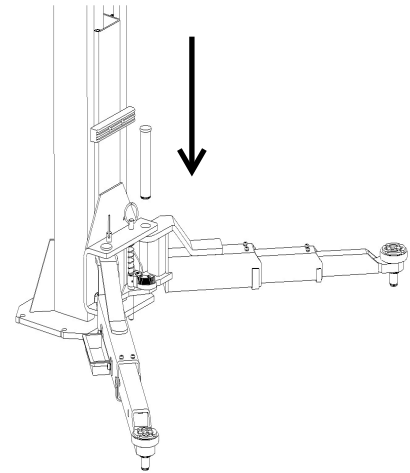


Fig15

## 11. Lift Adjustment

### 11.1 Preparation before the adjustment

- Lubricate contact surface of the carriage and corners of column with general-purpose lithium grease. All sliding surface should be coated evenly from top to bottom.
- Fill hydraulic oil N32 or N46 to the oil reservoir of the power unit.

### 11.2 Adjustment procedure

- Check to see if the power supply is installed properly.
- Check for the tightness of all the connecting bolts.
- Press the start button on the motor, and the

carriage rises; stop pressing the button, and then the carriage will stop. In order to lower the carriage, first pull the steel rope for releasing safety locks on the two carriages one time for each. In case of failure to pull the wire, re-pull after raising carriage a little. Press the lowering handle on the power unit and the carriage will be lowered; stop pressing the handle, then the carriage will stop. In case of vehicle repairing, when the vehicle is lifted up to the required height, first press the oil release handle to actuate the mechanical safety lock in order to ensure the safety operation.

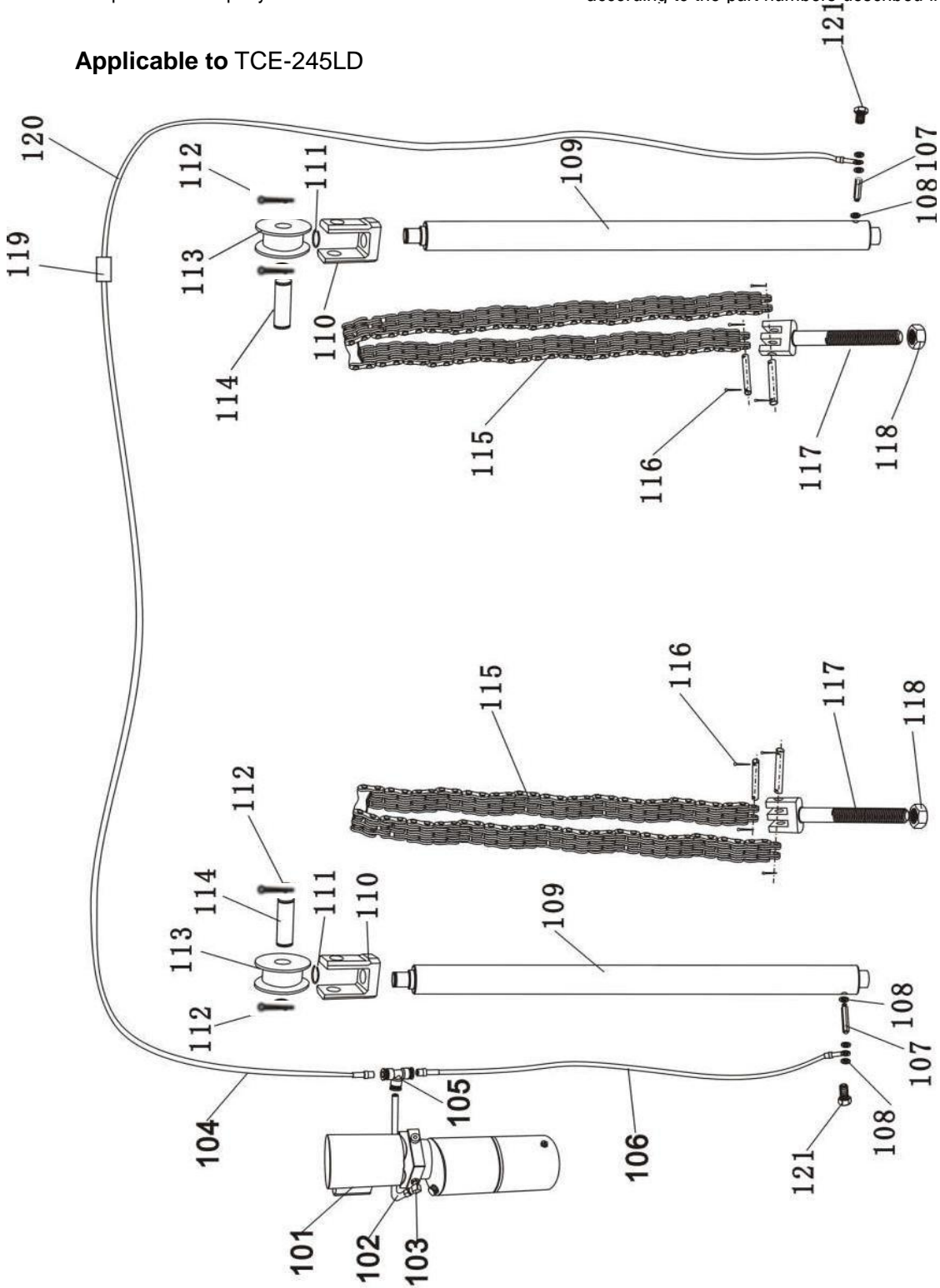
- The hydraulic system may contain air due to new installation, to bleed the air, repeat the lifting and lowering for several times
- The adjustment is completed

## 12. List of the Lift components

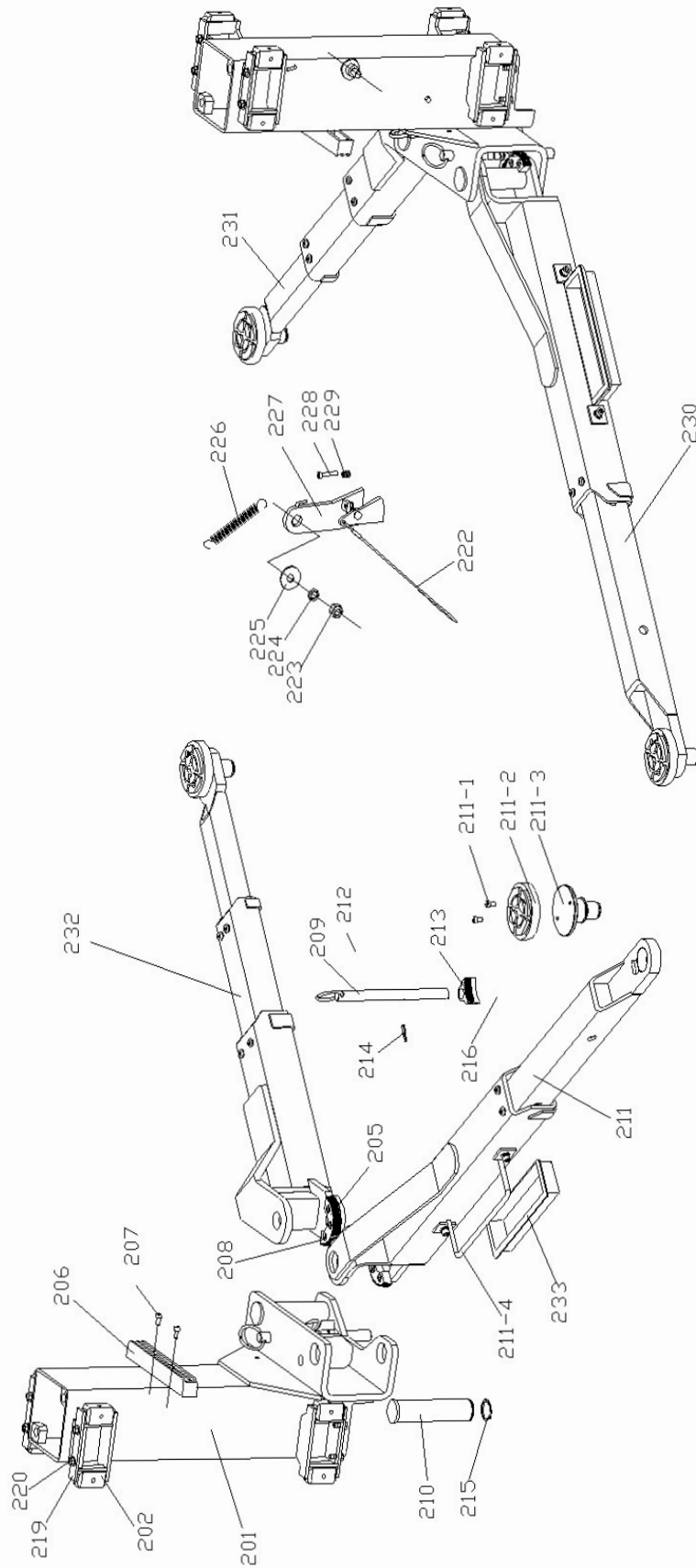
This list is only used as the information for the maintenance and repair. Our company will not be liable for other uses.

In case of any damage parts, ask distributor for parts according to the part numbers described in detail

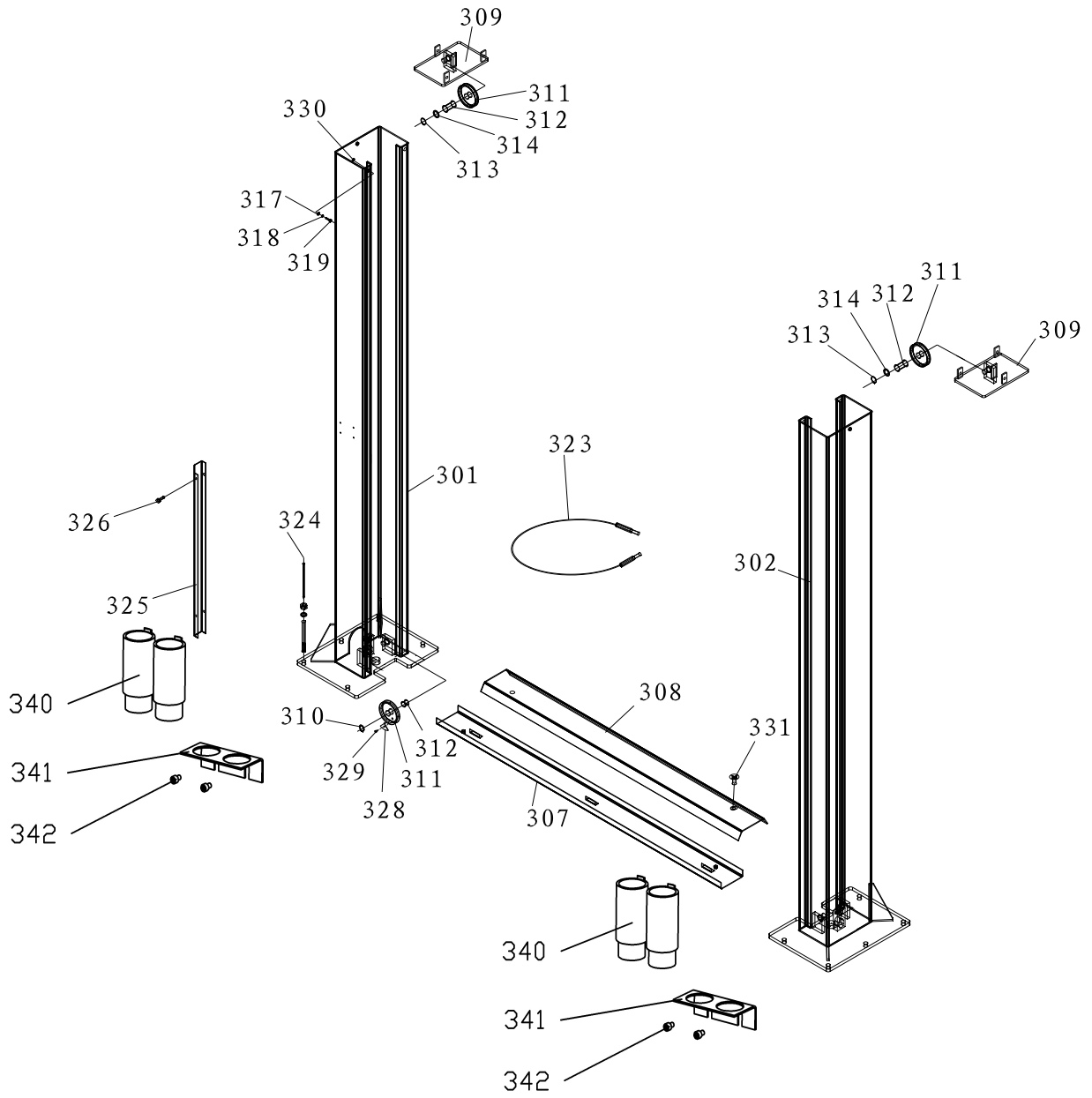
Applicable to TCE-245LD



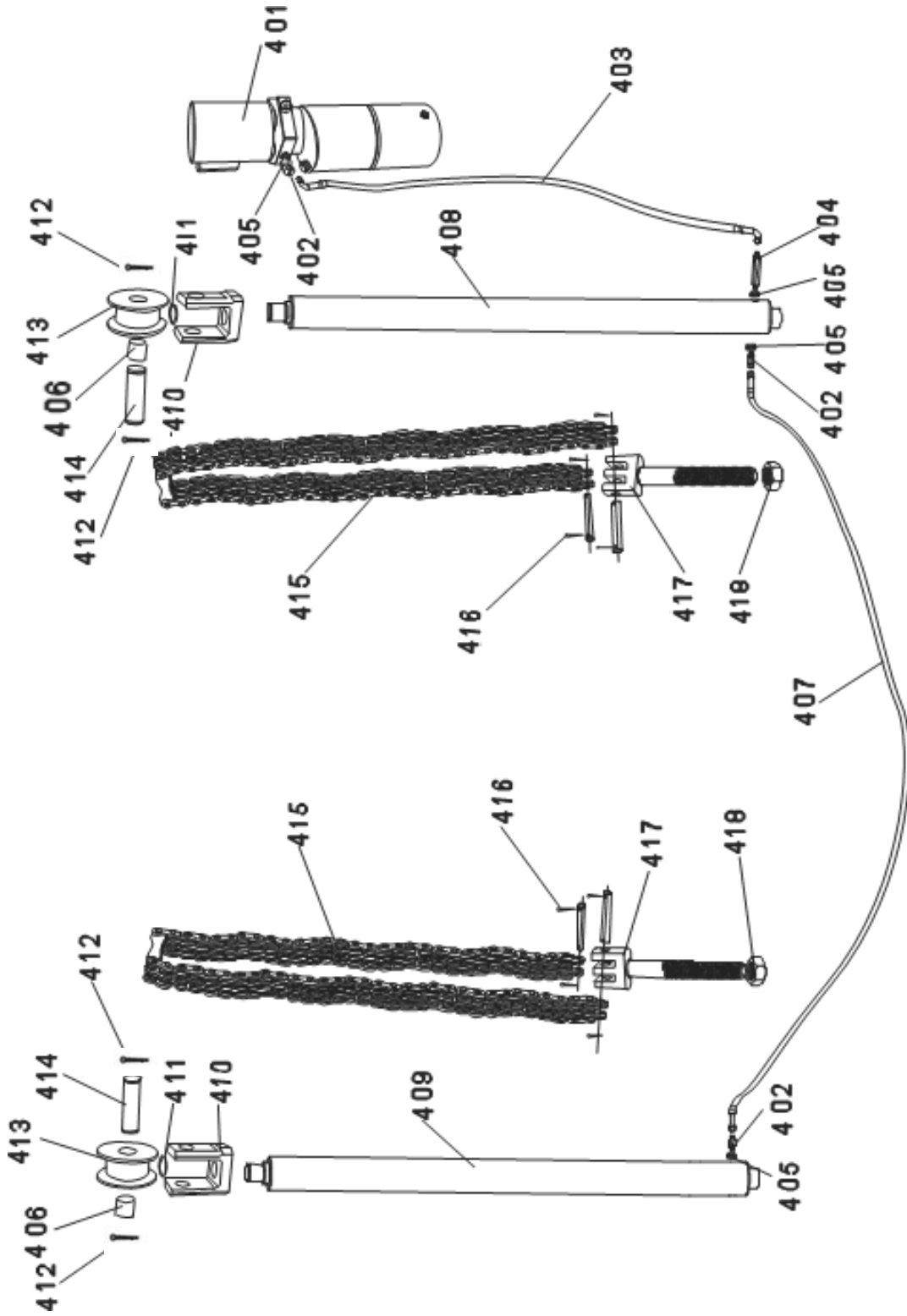
Applicable to TCE-245LD/TCE-245LC



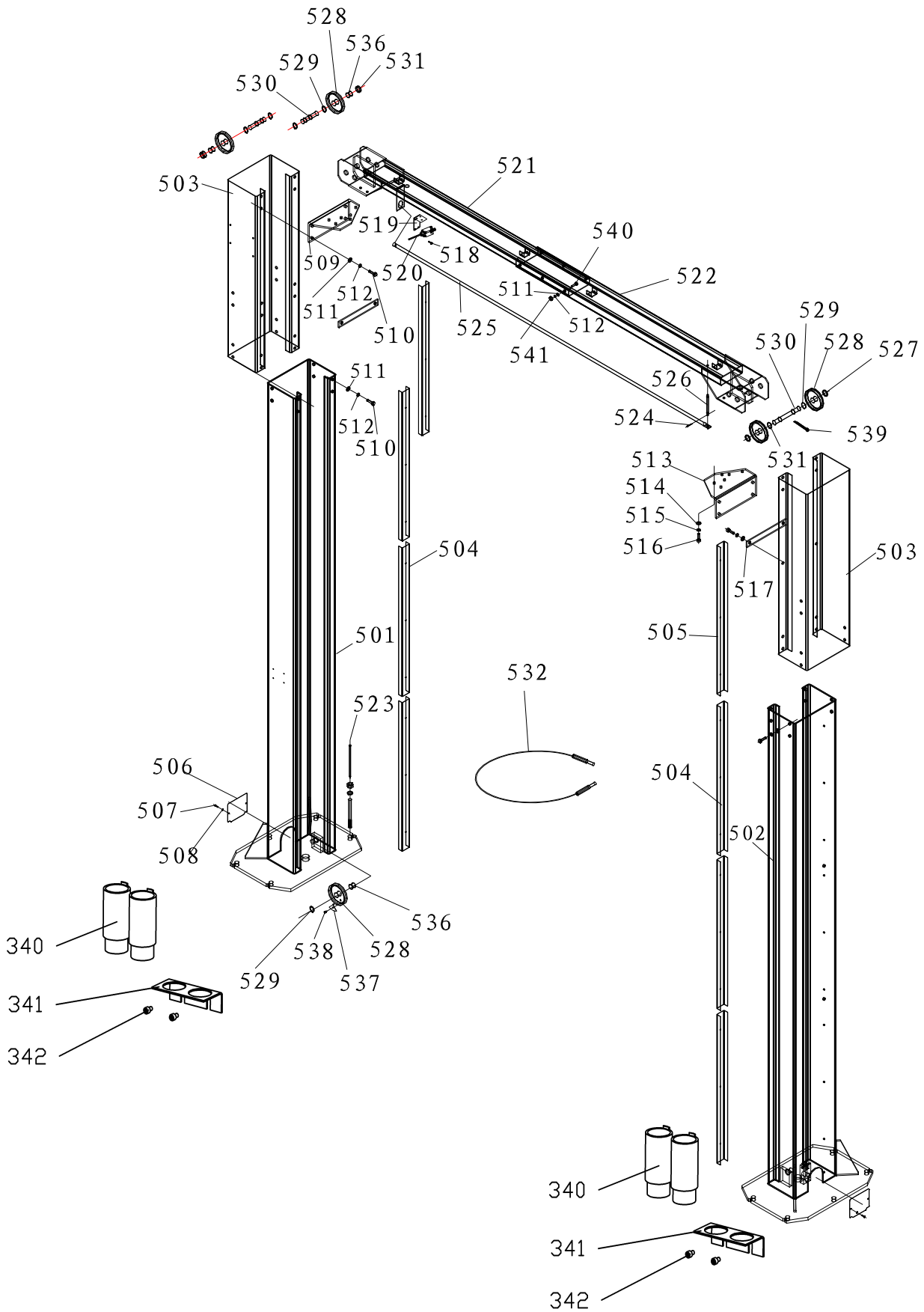
Applicable to TCE-245LC



Applicable to TCE-245LC



Applicable to TCE-245LD



No.	Code	Name
201	B10218017924	Carriage
	B10218017927	Carriage
202	104990132	Sliding block
	103202958	Sliding block adjustment shim (for adjusting)
205	B10218014457	Semi-gear
206	B10218010789	Door rubber Strip
207	B10803010058	Screw M6×16
208	B10803010042	Screw M10×20
209	B10218016616	Top rod assembly
210	B10218014400	Pin
211	B10218016619	Arm I
211-1	B10803010395	Screw M8×14
211-2	B10218010103	Rubber pad
211-3		Lifting pad assembly
211-4	B10218014466	Stop lever
212	B10218014422	Spring
213	B10218010044	Gear block
214	B10805010048	Pin 5×35
215	B10801010017	Returning ring 45
216	B10218014423	Gromment
219	201025138	Top board
220	103020231	Screw M10×20
222	201020500	Steel cable assembly
223	103030131	Nut M16
224	103040159	Spring washer16
225	103040136	Flat washer16
226	103110061	Spring
227	103202345	Safety block
228	103010471	Screw M8×40
229	103110060	Spring
230	B10218016626	Arm II
231	B10218016708	Arm III
232	B10218016713	Arm IV
233	B10218014401	Tool tray

301	201024751	Power side column
302	201024750	Offside column
303	201025083	Bracket Of power unit
304	103010326	Screw M6×12
307	201025072	Floor plate
308	201025071	Floor plate cover
309	201024764	Top plate assembly
310	103050035	Retaining ring 25
311	103203017	Top pulley
312	103200699	Bushing 2520
313	103050031	Retaining ring 25
314	103040176	Washer
317	103040110	Flat washer 12
318	103040044	Spring washer 12
319	103020104	Bolt M12×35
320	103040123	Flat washer 10
321	103040122	Spring washer 10
322	103020038	Bolt M10×25
323	103260337	Steel cable
324	103020123	Anchor bolt M18×160
325	201010083	Cover of hose
326	103010432	Screw M5X12
328	103203019	Lateral positioning sheet
329	103020188	Bolt M5×10
330	103030129	Nut M12
331	103010463	Screw M10×35
340	B10218010166	Truck adapters
341	B10218011088	Shelf
342	B10803010068	Screw M8x12

401		Power unit
402	103202194	Fitting
403	104120076	HP Hose
404	103100324	Throttle joint
405	103040157	Seal gasket14
406	103260098	Bushing 3052
407	104120079	HP Hose
408	103260123	Master cylinder
409	103260129	Sub cylinder
410	103203472	Sheave seat
411	103050029	Returning ring 32
412	103060349	Pin 5×40
413	103201950	Sheave
	103260098	Bushing 3052
414	103203736	Sheave axle
415	103200939	Leaf chain
416	X103060340	Pin 2×26
417	103200938	Chain threaded end
418	103030131	Nut M16
501	201025104	Power side column
502	201025105	Offside column
503	201025112	Extension column
504	201025073	Protective cover inside the column
505	201011152	Protective cover for extension column
506	201011236	Bottom cover of column
507	103010498	Screw M5×8
508	103040132	Flat washer5
509	201025066	Connecting bracketI
510	103020104	Bolt M12×35
511	103040110	Flat washer12
512	103040044	Spring washer12
513	201025067	Connecting bracketII
514	103040123	Flat washer10
515	103040122	Spring washer10
516	103020038	Bolt M10×25
517	201011176	Reinforced plate

518	103010429	ScrewM4×25
519	103201545	Bracket
520	105990008	Limit switch
521	201025069	Inner top beam
522	201025070	Outer top beam
523	103020123	Anchor bolt M18×160
524	103060342	Pin 3X26
525	103250270	Long rod
526	103203197	Long rod axle
527	103203325	Bushing II
528	103203017	Pulley
529	103050035	Returning ring 25
530	103203809	Symmetric axle (for symmetrical installation)
531	103203324	Bushing I
532	103260338	Steel cable
534	103020190	ScrewM6×10
535	201025083	Bracket for power unit
536	103200699	Bushing2520
537	103203019	Lateral positioning sheet
538	103020188	Bolt M5×10
539	103060349	Pin 5×40
540	103020126	Bolt M12×25
541	103030129	Nut M12



## **After-Sales Service**

1. Maintenance service: 2 Years Warranty
2. Damage caused by abnormal operation and man-made or natural disasters is not covered by the warranty.
3. Any damage caused by disassembling and replacing any part of the machine is not covered by the warranty.
4. During the warranty period, we will deal with it immediately within 48 hours after receiving the notice. Please wait patiently for the reply from the relevant responsible personnel.
5. If you have any problem, please contact us firstly.

**E-mail: [torinbigredusa@gmail.com](mailto:torinbigredusa@gmail.com)**

