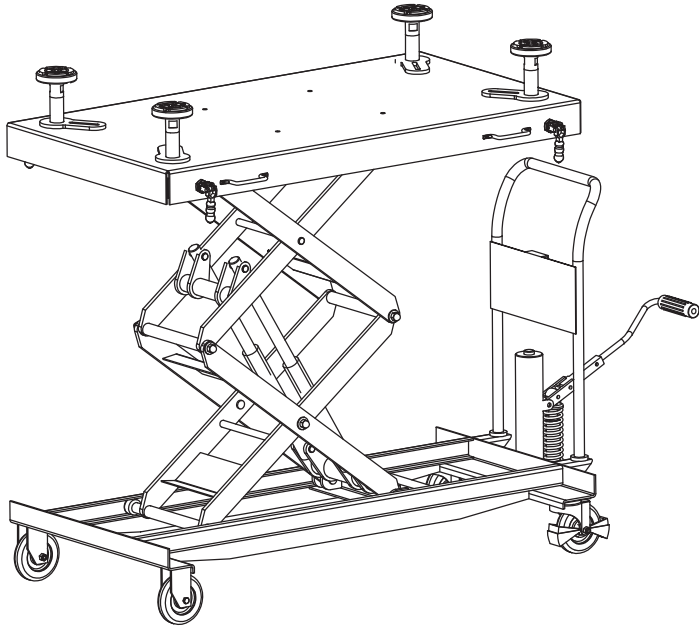


1 TON

HYDRAULIC PLATFORM CART FOR NEW ENERGY VEHICLE



OWNER'S MANUAL

INSTRUCTIONS FOR USE

PRODUCT INTRODUCTION

Welcome to use the company's latest production of sytj manual hydraulic scissor platform vehicles, this series of models are: SYTJ-15, SYTJ-50 (folding and fixed handle can be optional); SYTJ-100 (single shear); SYTJ-S35, SYTJ-S50 (double shear); SYTJ-S50w, SYTJ-S100w (double shear type external cylinder). This series of models have the advantages of good rigidity, high strength, durability and easy operation. For your safety and correct operation, please read this manual and all kinds of warning labels on the car carefully before use.

PURPOSE

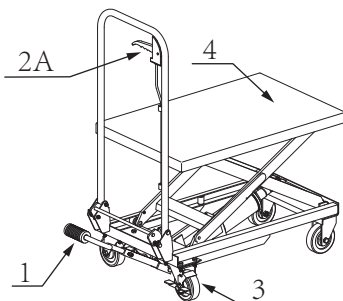
Sytj manual hydraulic scissor type vehicle has the advantages of free lifting, flexible walking, convenient operation, beautiful style and no pollution. It can be widely used as a temporary working platform for goods handling in workshops, warehouses, freight yards and other small sites. It is an ideal tool to reduce fatigue strength, improve production efficiency and realize safe loading and unloading.

SAFETY GUIDE

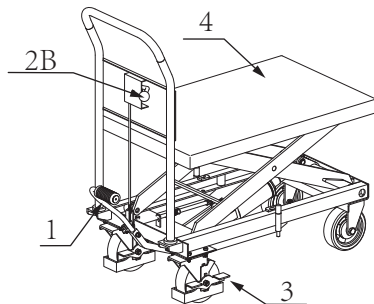
1. The operator must read this manual carefully before use.
2. The load of the platform shall not exceed its rated load.
3. It is forbidden to ride on the platform vehicle.
4. When the platform rises or the platform does not move, the foot brake should be applied tightly to prevent car sliding.
5. It is not allowed to move the vehicle body or carry goods when the platform of the platform car is high.
6. Only use platform vehicle on smooth and flat ground.
7. When descending, the control handle should be pulled slowly to make the goods fall slowly and steadily.
8. It is strictly forbidden to put hands and feet under the working platform and touch the lifting scissors.
9. Our company will not be responsible for any damage caused by not following the above warning and instructions.

OPERATION

1. Diagram of truck body
1. Step on the foot handle (1) repeatedly with the foot to lift the working platform.
2. When the control handle (2b) is pressed down (the folding handle is: hold the control handle (2a) upward), the working platform (4) will descend. The force of pressing down can control the descending speed. Release the control handle to restore the state, and the platform (4) can stop descending.
3. Before loading, the rear wheel brake (3) must be braked to avoid accidents.



Folding handle



Fixed handle

FAULT CAUSE ANALYSIS AND TROUBLESHOOTING

Fault phenomenon	Cause analysis	processing method
Platform cannot rise	-There is no oil in the cylinder -Oil drain screw or steel ball not in place	-Add hydraulic oil -Readjust or clean the drain screw or steel ball
The platform cannot stop at the rising position and slide down slowly	-Oil drain screw or steel ball not in place	-Readjust or clean the drain screw or steel ball
The platform cannot descend	-The YSD seal ring has been damaged -Loosen the universal joint and rotate freely -The drain screw is not open	-Replace YXD type sealing ring -Check if the universal joint is installed -Readjust the drain screw
Oil leakage at drain screw	-O-ring damaged	-Replace the O-ring
The platform truck cannot lift the rated weight	-The pressure regulating spring is invalid	-Replace the pressure regulating spring

MAINTAIN

1. Each friction part must be filled with lubricating oil once a month.
2. Check the movement and friction of the wheel and keep the wheel in normal condition.
3. Check whether the rear wheel brake is effective.
4. Check the hydraulic cylinder for oil leakage.

TECHNICAL PARAMETER

Double scissors

Item	Unit	TDP10001
Rated load	kg	1000
Minimum platform height	mm	550
Maximum height of platform after lifting	mm	1750
Platform size	mm	1500X800
Wheel size	mm	Φ150×50
Height of handle from the ground	mm	1100
Times of platform lifting to max. pump pressure		≤ 170
Dead weight	kg	270

*The company reserves the right to change product design and spe

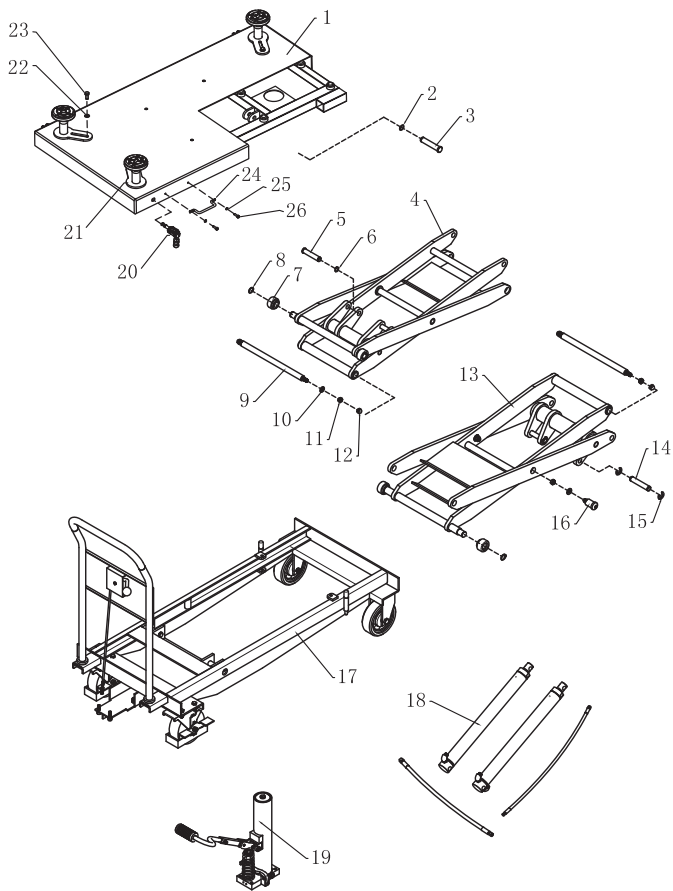


Fig.1

NO.	Part name	QTY	NO.	Part name	QTY	Remarks
1	Platform plate weldment	1	14	Lifting cylinder pin	2	
2	Shaft retaining ring Φ 20	2	15	Split ring Φ 15	4	
3	Platform pin	2	16	Lower central axis	2	
4	Lifting bracket weldment	1	17	frame assembly	1	see fig.2
5	Lifting rod pin	2	18	Cylinder assembly	1	see fig.3
6	Shaft retaining ring Φ 18	2	19	External cylinder assembly	1	see fig.4
7	Upper and lower rollers	4	20	Fixture	4	
8	Shaft retaining ring Φ 22	4	21	Adjusting tray parts	4	
9	Supporting shaft	2	22	Washer 12	4	
10	Flat cushion Φ 30	6	23	Bolt M12X30	4	
11	Jam nut M12	6	24	Handle	4	
12	Cover nut M12	4	25	Spring washer	8	
13	Lower lifting bracket weldment	1	26	Bolt M8X15	8	

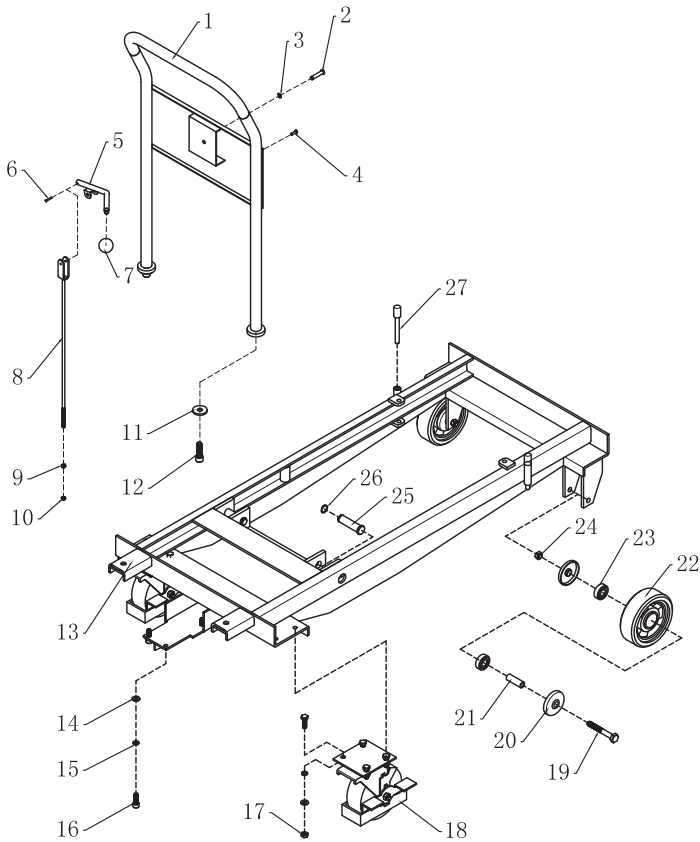


Fig.2
Frame assembly

NO.	Part name	QTY	NO.	Part name	QTY	NO.	Part name	QTY
1	Handle weldment	1	10	LOCK NUT M6	1	19	Hexagon bolt M12 × 90	2
2	Handle pin	1	11	Handle seat gasket	2	20	Bearing cover	4
3	Split ring Φ 6	1	12	Hexagon bolt M12 × 40	2	21	Bolt sleeve	2
4	Blind rivet Φ 5 × 16	6	13	Frame weldment	1	22	front wheel	2
5	Control handle weldment	1	14	Flat cushion Φ 10	11	23	Bearing 6203	4
6	Rivet Φ 3 × 25	1	15	Spring pad Φ 10	11	24	Jam nut M12	2
7	Bakelite handball	1	16	Hexagon bolt M10 × 30	11	25	Frame pin	2
8	Handle pull rod weldment	1	17	Nut M10	8	26	Shaft retaining ring Φ 20	2
9	NUT M6	1	18	Rear wheel group Φ 150 × 50	2	27	Limit shaft	2

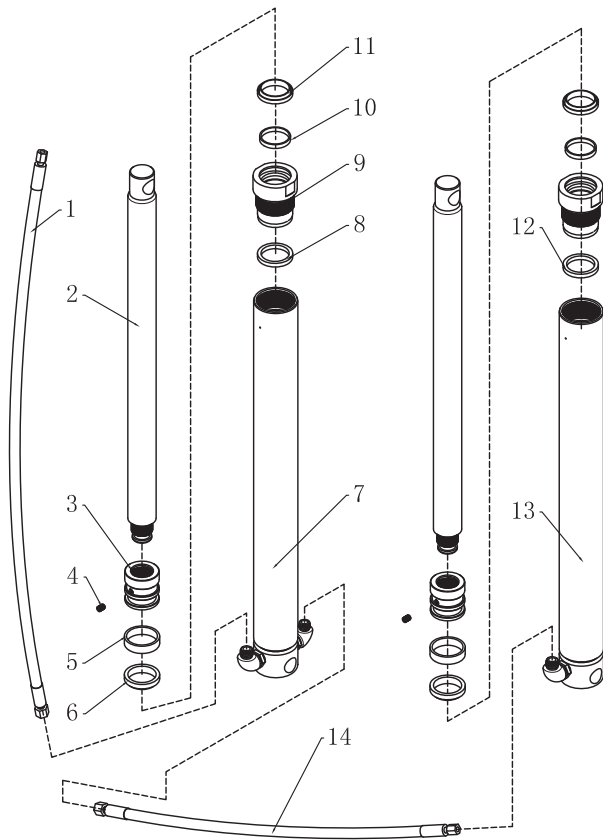


Fig.3
Cylinder assembly

NO.	Part name	QTY	NO.	Part name	QTY
1	Tubing M14 × 1.5/800	1	8	Cylinder top sleeve 2	1
2	Lifting rod	2	9	Cylinder nut	2
3	piston	2	10	Wear resistant belt d35 × D32 × 5.2	2
4	Hexagon socket flat end set screw M6 × 8	2	11	Dust ring d40 × D32 × 5 / 6.5	2
5	Wear resistant belt d40 × D35 × 10	2	12	Cylinder top sleeve 1	1
6	Y-ring d40 × D32 × 8	2	13	Lifting cylinder weldment 2	1
7	Lifting cylinder weldment 1	1	14	Tubing M14 × 1.5/390	1

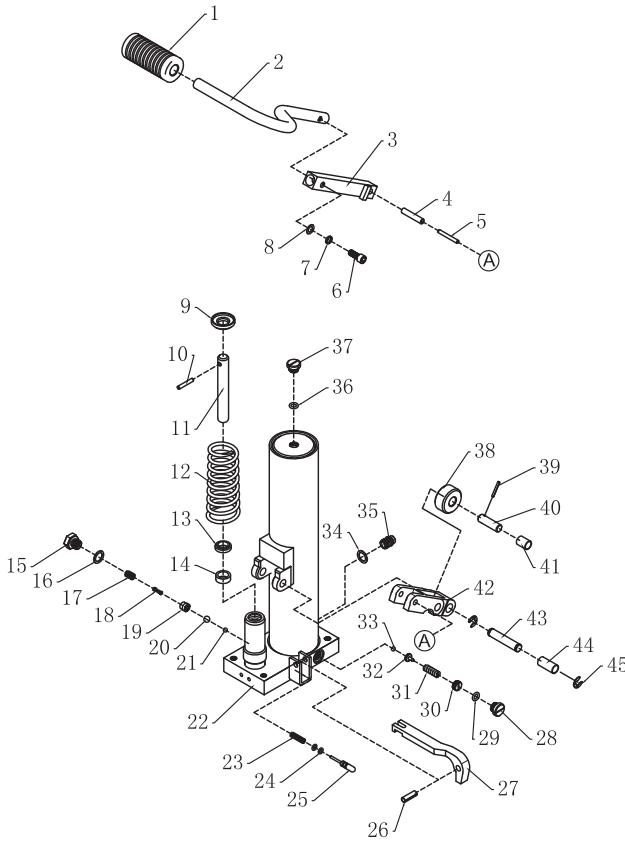


Fig.4
External cylinder assembly

NO.	Part name	QTY	NO.	Part name	QTY	NO.	Part name	QTY
1	Rubber sleeve	1	16	Copper washer	1	31	Pressure regulating spring	1
2	Pedal handle	1	17	Valve sleeve spring	1	32	Pressure regulating spring seat	1
3	Rocker weldment	1	18	Spool spring	1	33	Steel ball s $\Phi 6$	1
4	Elastic pin $\Phi 8 \times 40$	1	19	Valve sleeve	1	34	Combined washer $\Phi 14$	1
5	Cylindrical pin $\Phi 5 \times 40$	1	20	Steel ball s $\Phi 9$	1	35	Straight joint M14 $\times 1.5$	1
6	Hexagon socket screw M8 $\times 20$	1	21	Steel ball s $\Phi 6$	2	36	O-ring d11.2 $\times 2.65$	1
7	Spring pad $\Phi 8$	1	22	Valve plate weldment	1	37	Oil hole screw	1
8	Flat cushion $\Phi 8$	1	23	Oil drain rod spring	1	38	Roller	1
9	Spring pad	1	24	O-ring D8 $\times 1.8$	2	39	Elastic pin $\Phi 3 \times 24$	1
10	Cylindrical pin $\Phi 5 \times 32$	1	25	Oil drain rod	1	40	Compression axle	1
11	Compression bar	1	26	Elastic pin $\Phi 8 \times 25$	1	41	Composite bushing d12 \times D14 $\times 18$	1
12	Conical spring	1	27	Swing bar	1	42	Step on the lever	1
13	Dust ring d24 \times D16 $\times 4.5/6$	1	28	Pressure regulating valve sealing screw	1	43	Cylinder trunnion	1
14	Y-ring d22 \times D16 $\times 8$	1	29	O-ring d11.2 $\times 2.65$	1	44	Composite bushing d12 \times D14 $\times 30$	1
15	Oil valve sealing bolt	1	30	Pressure regulating screw	1	45	Split ring $\Phi 9$	2