

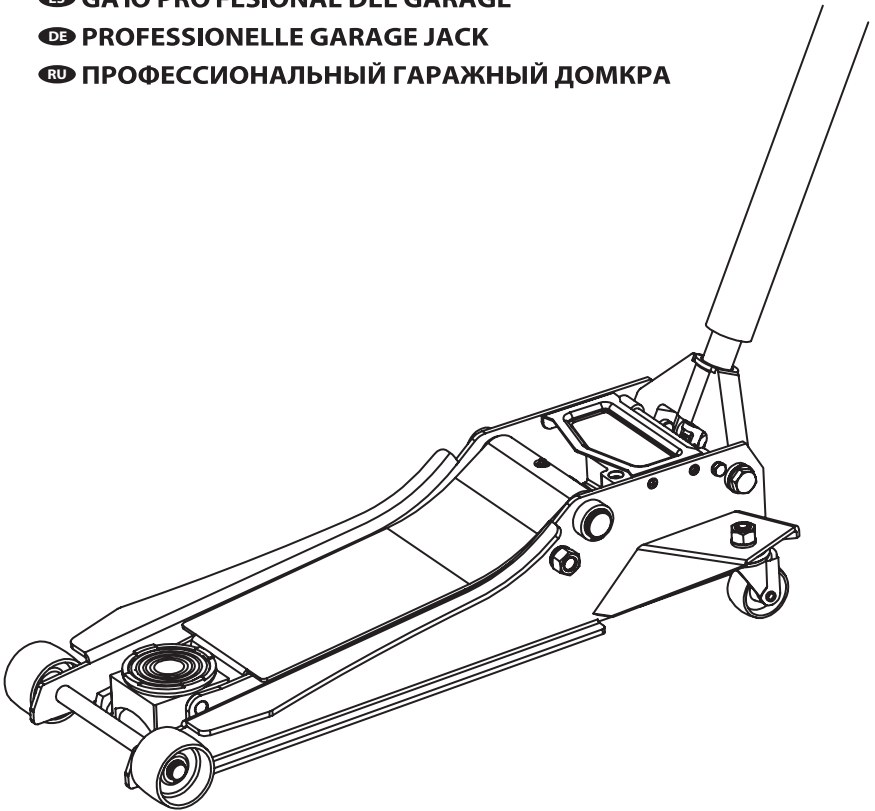
3 TON PROFESSIONAL GARAGE JACK

FR CRIC PROFESSIONNEL DE GARAGE

ES GATO PROFESIONAL DEL GARAGE

DE PROFESSIONELLE GARAGE JACK

RU ПРОФЕССИОНАЛЬНЫЙ ГАРАЖНЫЙ ДОМКРА



▲ WARNING!

Read carefully and understand all ASSEMBLY AND OPERATION INSTRUCTIONS before operating. Failure to follow the safety rules and other basic safety precautions may result in serious personal injury.

INTENDED USE

This heavy-duty jack has a single hydraulic pump piston that effortlessly raises the lift arm. Pump piston dust shields and wiper seals protect the hydraulic system from contaminants. The jack features an overload valve bypass system to prevent jack damage and user injury. Compact design allows use in confined spaces. Easily fits under low vehicles. Meets ASME PASE safety standards.

TECHNICAL SPECIFICATIONS

Capacity	Lifting Range Min. (Inch)	Lifting Range Max. (Inch)	Lifting Range Min. (mm)	Lifting Range Max. (0m)
3 TON	3-3/8	24	85	610

GENERAL SAFETY RULES

- ⚠ WARNING:** Read and understand all instructions. Failure to follow all instructions listed below may result in serious injury.
- ⚠ CAUTION:** Do not allow persons to operate or assemble this jack until they have read this manual and have developed a thorough understanding of how the jack works.
- ⚠ WARNING:** The warnings, cautions, and instructions discussed in this instruction manual cannot cover all possible conditions or situations that could occur. It must be understood by the operator that common sense and caution are factors that cannot be built into this product, but must be supplied by the operator.

GENERAL SAFETY RULES IMPORTANT SAFETY CONSIDERATIONS

INSPECTION

- Inspect the jack carefully before each use. Ensure the jack is not damaged, excessively worn, or missing parts.
- Do not use the jack unless it is properly lubricated.
- Using a jack that is not in good clean working condition or properly lubricated may cause serious injury.
- Inspect the work area before each use. Make sure it is free and clear of any potential hazards.

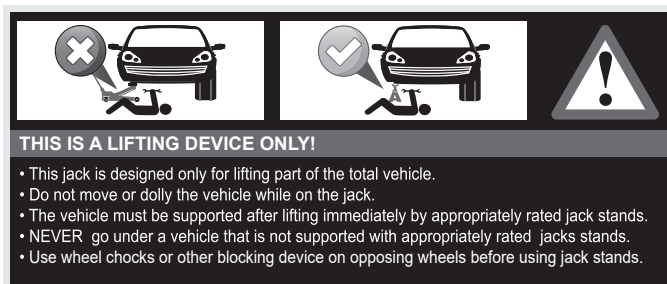
DO NOT OPERATE OR REPAIR THIS EQUIPMENT WITHOUT READING THIS MANUAL.

To maintain the Service Jack and user safety, the responsibility of the owner is to read and follow these instructions.

- Inspect the service jack for proper operation and function.
- Keep instructions readily available for equipment operators.
- Make certain all equipment operators are properly trained; understand how to safely and correctly operate the unit.
- Allow unit operation only with all parts in place and operating properly.
- Use only genuine replacement parts.
- Service and maintain the unit only with authorized or approved replacement parts; negligence will make the jack unsafe for use and void the warranty.
- Carefully inspect the unit on a regular basis and perform all maintenance as required.
- Store these instructions in the handle of your jack.
- Keep all decals on the unit clean and visible.

SAFETY

Always follow safety precautions when installing and operating this jack. Keep all decals on the unit clean and visible. Before proceeding ensure that you fully understand and comprehend the full contents of this manual. Failure to operate this equipment as directed may cause injury or death. The distributor is not responsible for any damages or injury caused by improper use or neglect.



⚠ WARNING!

Always use Jack Stands!

DO NOT USE wood blocks or any other non-approved load sustaining devices. The manufacturer only warrants loads to be sustained by jack stands that meet current ASME standards.

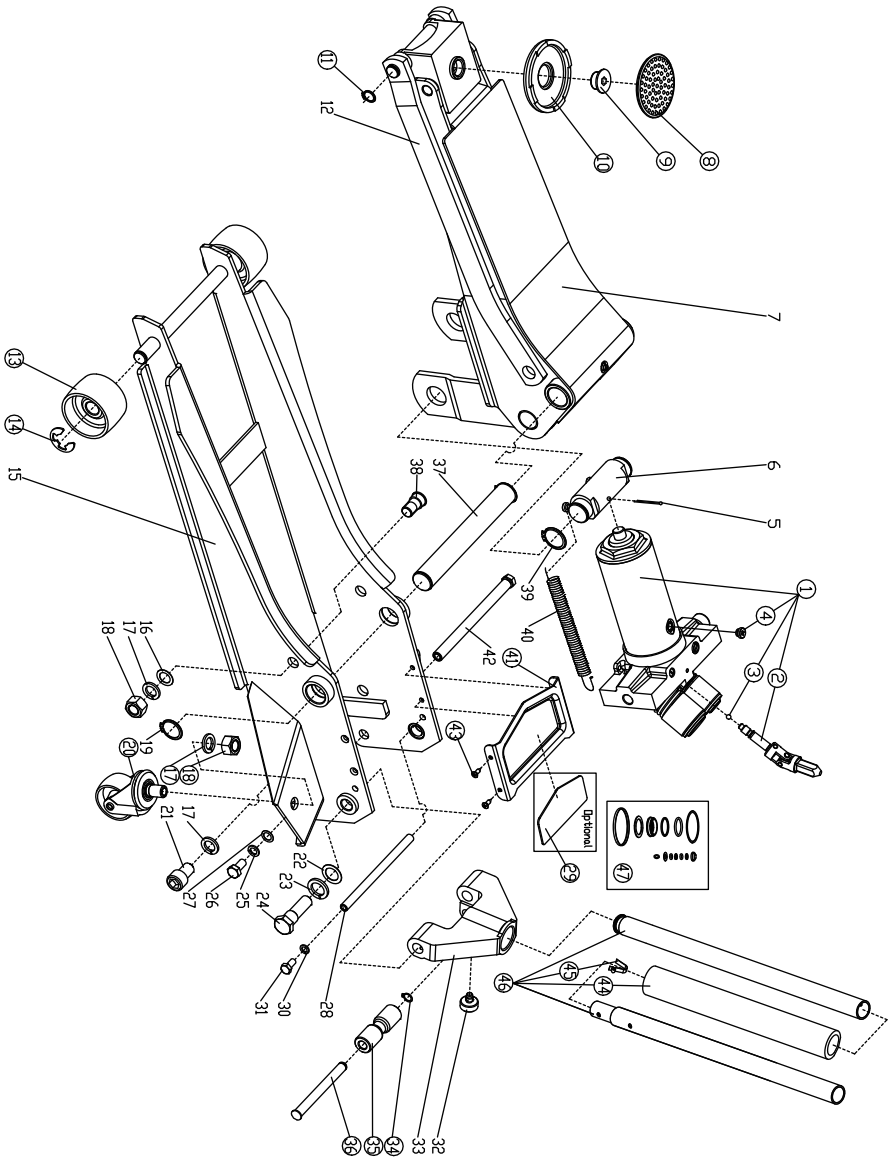
DO NOT USE wood blocks or any other non-approved lifting devices for a means of lifting with the jack and/or load being raised. Failure to heed these warnings may cause injury or death.

SAFETY MARKINGS

⚠ WARNING!

1. Study, understand, and follow all instructions before operating this device.
2. Do not exceed rated capacity.
3. Use only on hard, level surfaces, with less than 3 degrees of slope.
4. Lifting device only. Immediately after lifting, support the vehicle with appropriate means.
5. Do not move or dolly the vehicle while on the jack.
6. Lift only on areas of the vehicle as specified by the vehicle manufacturer.
7. No alterations shall be made to this product.
8. Only attachments and/or adapters supplied by the manufacturer shall be used.
9. Do not get under or allow anyone under the vehicle until it has been supported by jack stands.
10. Center load on saddle prior to lifting.
11. Use wheel chocks or other blocking device on opposing wheels before using jack.
12. Never use on a lawn mower or lawn tractor.
13. Do not use this jack for any use other than the manufacturer specified usage.
14. Do not rock the vehicle while working on or around equipment.
15. The following are not recommended for supporting on this equipment: Foundations, Homes, Mobile Homes, Trailers, RV's, Campers, nor Fifth Wheels, etc...
16. Failure to heed these markings may result in personal injury and/or property damage.

ASSEMBLY DIAGRAM



REF#P	ART#	DESCRIPTIONQ	TY
1	Power unit assembly	TZ830009.3	1
2	Universal joint assembly	T830008.5-1	1
3	Steel ball bearing Ø6mm	GB/T 308	1
4	Oil plug	T815016L.3-13(ASM)	1
5		Cotter pin Ø4X45mm	1
6		Coupling connector	1
7		Lifting arm assembly	1
8	T815016CL-1	Saddle pad	1
9	T830003L-16	Pin for saddle	1
10	T830003XL-7	Saddle	1
11	GB/T 894.1	C-clip Ø18mm	2
12		Connected bar	2
13	T84004-3	Front wheel	2
14	GB/T 896	C-clip Ø15mm	2
15		Frame assembly	1
16		Washer M16	2
17	GB/T 859	Spring Washer M16	6
18	GB/T 6170	Nut M16	4
19		C-clip Ø28mm	2
20	T83508.6	Rear caster assembly M16	2
21		Socket head cap screw M16X25mm	2
22		Washer M18	2
23		Spring Washer M18	2
24		Shoulder bolt M18X65mm	2
25		Spring Washer M10	2
26		Hex head screw M10X16mm	2
27		Washer M10	2
28		Position shaft for handle socket	1
29	T830008-10	Magnetic spacer	1
30		Spring Washer 8	2
31		Hex head screw M8X20mm	2
32	T830008.2-4	Handle socket screw M10X23.5mm	1
33		Handle socket	1
34	GB/T 894.1	C-clip Ø12mm	1
35	T830008.2-3	Contact roller	1
36	T830008.2-2	Pin for roller	1
37		Supporting shaft	1
38		Connecting bar pintle	2
39		C-clip Ø30mm	2
40		Return spring	2
41	T830008-5	Cover plate	1
42		Back shaft	1
43	GB/T 70.3	Hex drive flat head screw M6X16mm	4
44	T83508-9	Flexible protective pipe	1
45	T83508.5-4	Handle lock pin	1
46	T830018Z.2a	Handle assembly	1
47	T830008.MF	Seal kit	1

Made in china